



1
—
1

ELEVEN

 new PLAN
developments 

FINANCIAL
& BUSINESS
DISTRICT

NEW CAPITAL

ROOTED IN THE BALANCE OF FORM





new PLAN developments

We are one of the most trusted and recognised real estate lifestyle developers in Egypt.

Our goal isn't simply to build properties. We strive to shape communities that people love to live and work in.

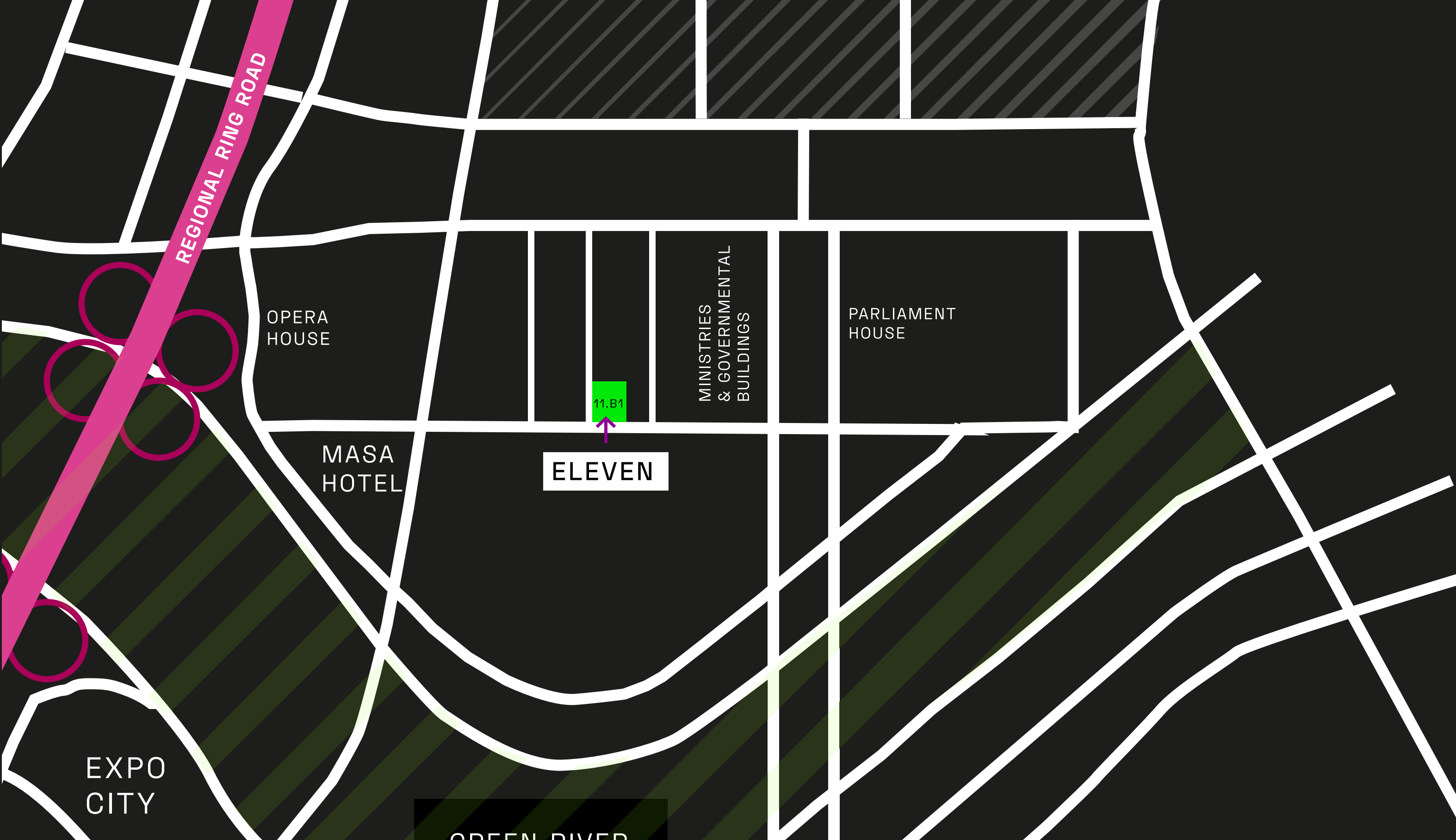
Communities that become homes; brimming with life and everything we love. Because home isn't just a place, it's a feeling. And that's what we promise to deliver to you every day.

NEW CAPITAL

is a momentous endeavour to build national spirit, foster consensus, provide for long-term sustainable growth and address various issues faced by Egypt through a new city, which will create more places to live, work and visit.

The masterplan is to create a global city with smart infrastructure for Egypts future, which will provide a multitude of economic opportunities and offer a distinct quality of life.





FINANCIAL
& BUSINESS
DISTRICT
NEW CAPITAL

The center of The New Capital , which holds all of the
Governmental services along with the Egyptian
Parliament , the Ministries buildings, Presidential
Palace, The Opera house, Al Masah Hotel and finally
The Green River.



ELEVEN

Eleven is located on a prime location, 11-B1 on a Main street which spreads over 90 Meters. While also it is the start of a Secondary street which lays over 60M in the Financial & Business district , infront of Al Ma-sah Hotel , as also it is 2 minutes away from Ministries, Complex , Governmental district , Egyptian parliament and the Regional ring road, which makes it the heart of the New Capital.



BUILDINGS DETAILS

LAND AREA

9817 m²

FOOTPRINT

2945 m²

PAKRING SLOTS

167

LANDSCAPE

2167 m²



**TAILORED
MADE
SPACES.
FOR EVERY
BUSINESS
NEED.**



EXTERIOR DESIGN



FRONT VIEW

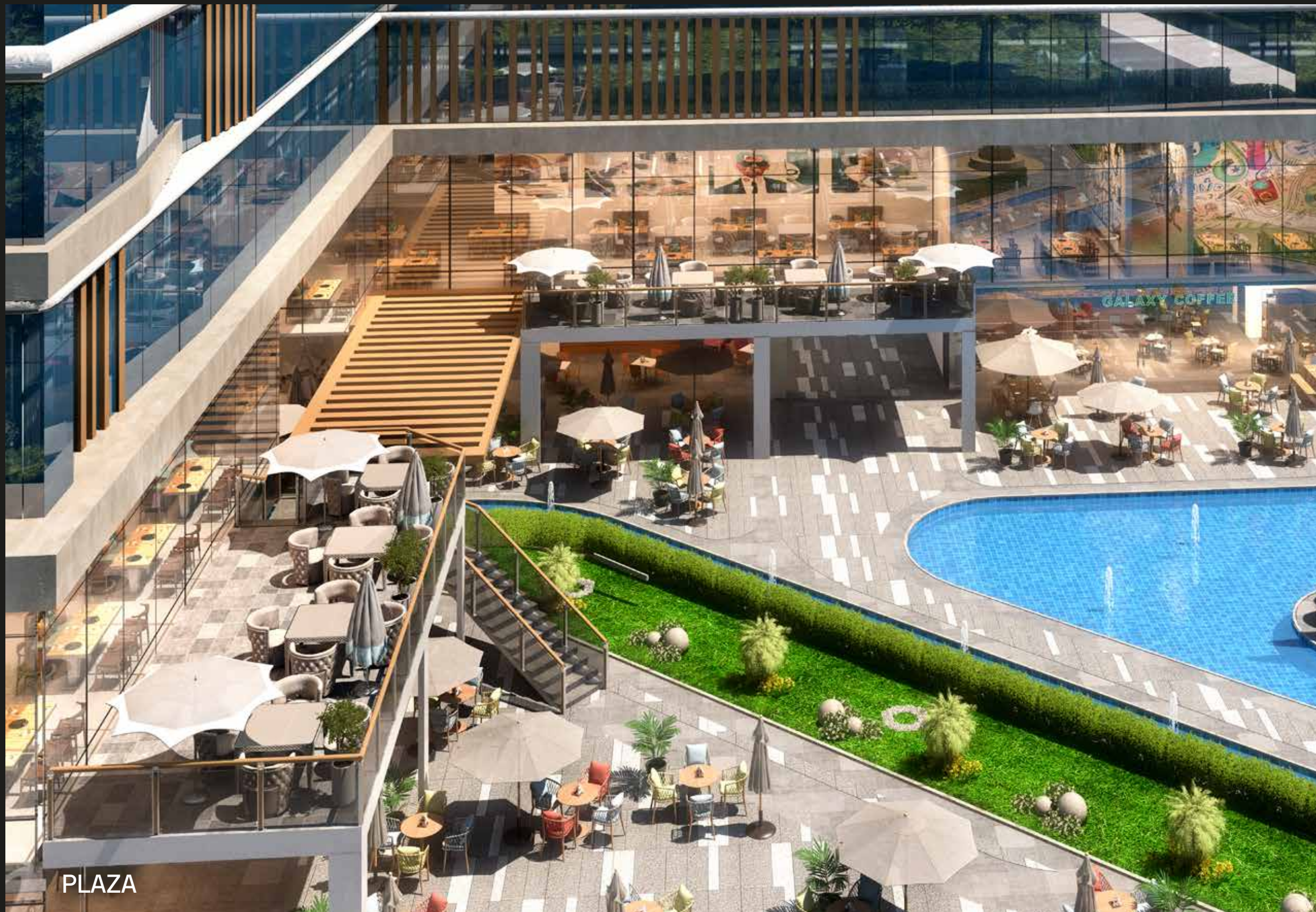


FRONT VIEW



PLAZA





**THE
FUTURE
SETUP FOR
EVERY
SUCCESS.**



INTERIOR DESIGN



RETAIL INNER VIEW



OFFICE LOBBY



OFFICE LOBBY



VIEW FROM THIRD FLOOR



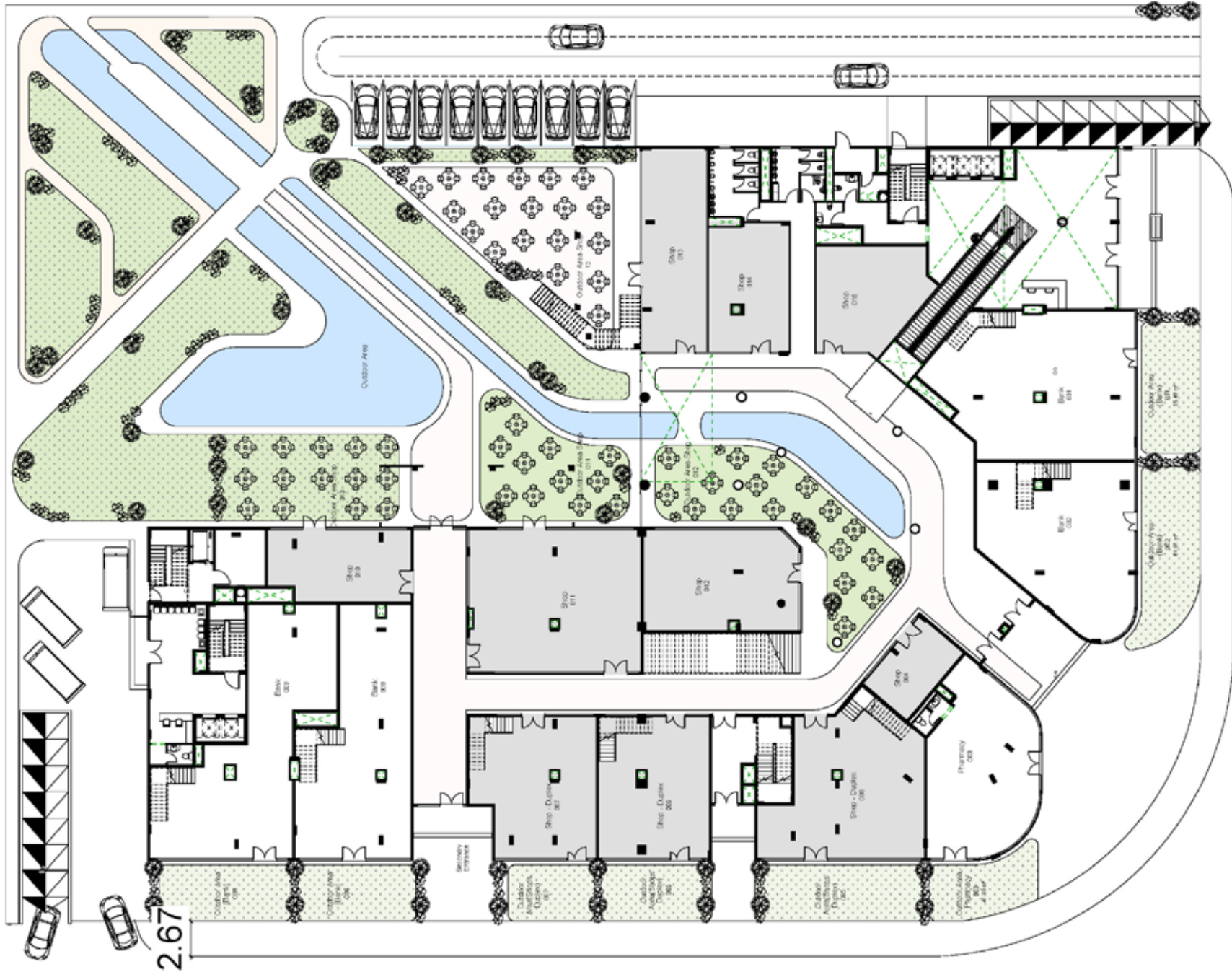
VIEW FROM SIXTH FLOOR

FLOORPLANS



GROUND FLOOR

RETAIL

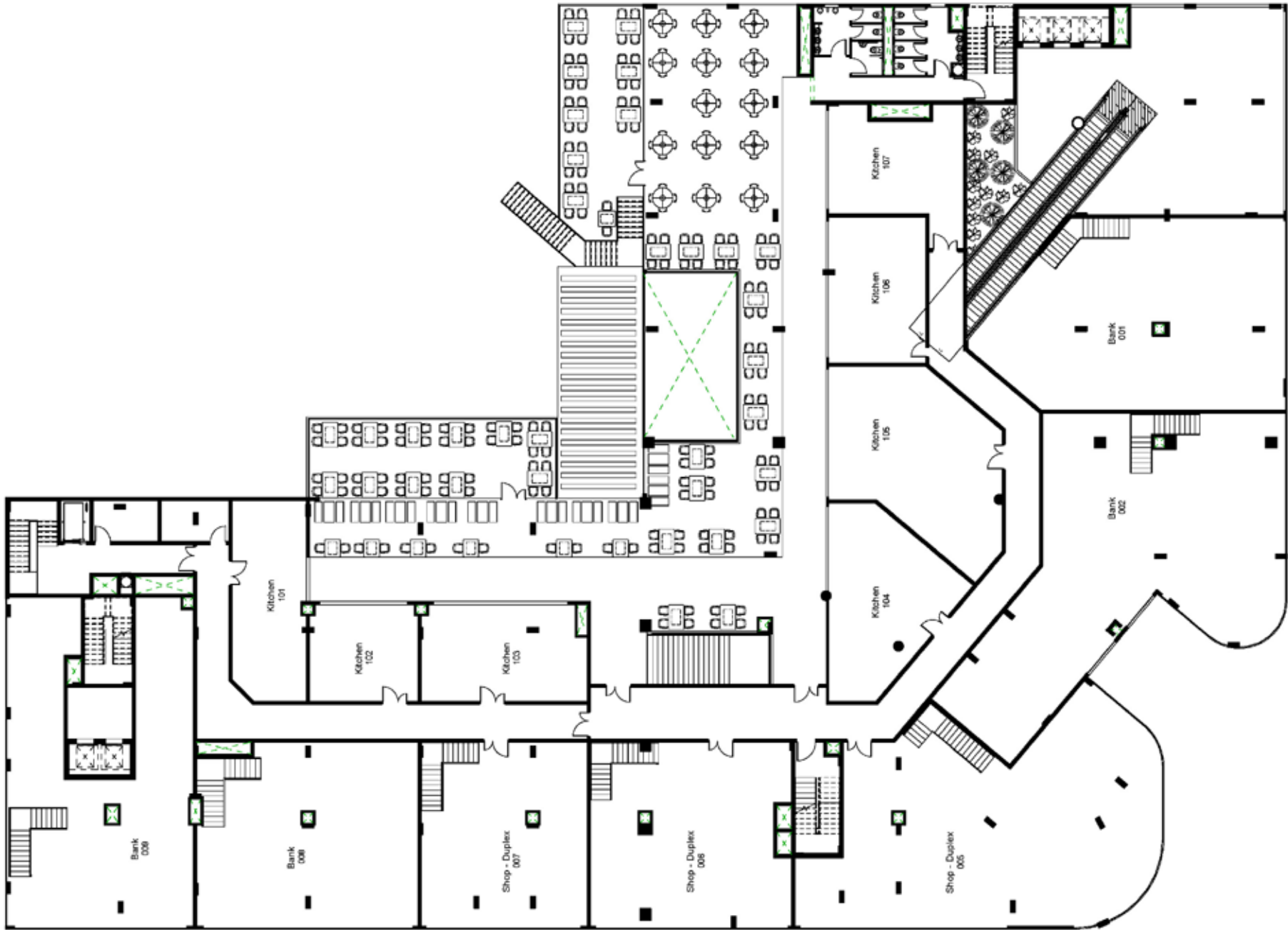


AREA: 3400 SQM

Disclaimer: 1. All room dimensions are measured to structural elements and exclude wall finishes and construction tolerances. 2. All dimensions have been provided by our consultant architects. 3. All materials, dimensions & drawings are approximate. Information is subject to change without notice. 4. Actual suite area may vary from the stated area. Drawings not to scale. 5. The units are measured at typical floor in the building. Columns may vary in size depending on the floor level.

FIRST FLOOR

RETAIL



AREA: 3246 SQM

Disclaimer: 1. All room dimensions are measured to structural elements and exclude wall finishes and construction tolerances. 2. All dimensions have been provided by our consultant architects. 3. All materials, dimensions & drawings are approximate. Information is subject to change without notice. 4. Actual suite area may vary from the stated area. Drawings not to scale. 5. The units are measured at typical floor in the building. Columns may vary in size depending on the floor level.

██████████



Disclaimer: 1. All room dimensions are measured to structural elements and exclude wall finishes and construction tolerances. 2. All dimensions have been provided by our consultant architects. 3. All materials, dimensions & drawings are approximate. Information is subject to change without notice. 4. Actual suite area may vary from the stated area. Drawings not to scale. 5. The units are measured at typical floor in the building. Columns may vary in size depending on the floor level.

██████████



FOURTH FLOOR

OFFICE



AREA: 3168 SQM

Disclaimer: 1. All room dimensions are measured to structural elements and exclude wall finishes and construction tolerances. 2. All dimensions have been provided by our consultant architects. 3. All materials, dimensions & drawings are approximate. Information is subject to change without notice. 4. Actual suite area may vary from the stated area. Drawings not to scale. 5. The units are measured at typical floor in the building. Columns may vary in size depending on the floor level.

FIFTH FLOOR

OFFICE



AREA: 3204 SQM

Disclaimer: 1. All room dimensions are measured to structural elements and exclude wall finishes and construction tolerances. 2. All dimensions have been provided by our consultant architects. 3. All materials, dimensions & drawings are approximate. Information is subject to change without notice. 4. Actual suite area may vary from the stated area. Drawings not to scale. 5. The units are measured at typical floor in the building. Columns may vary in size depending on the floor level.

SIXTH FLOOR

OFFICE

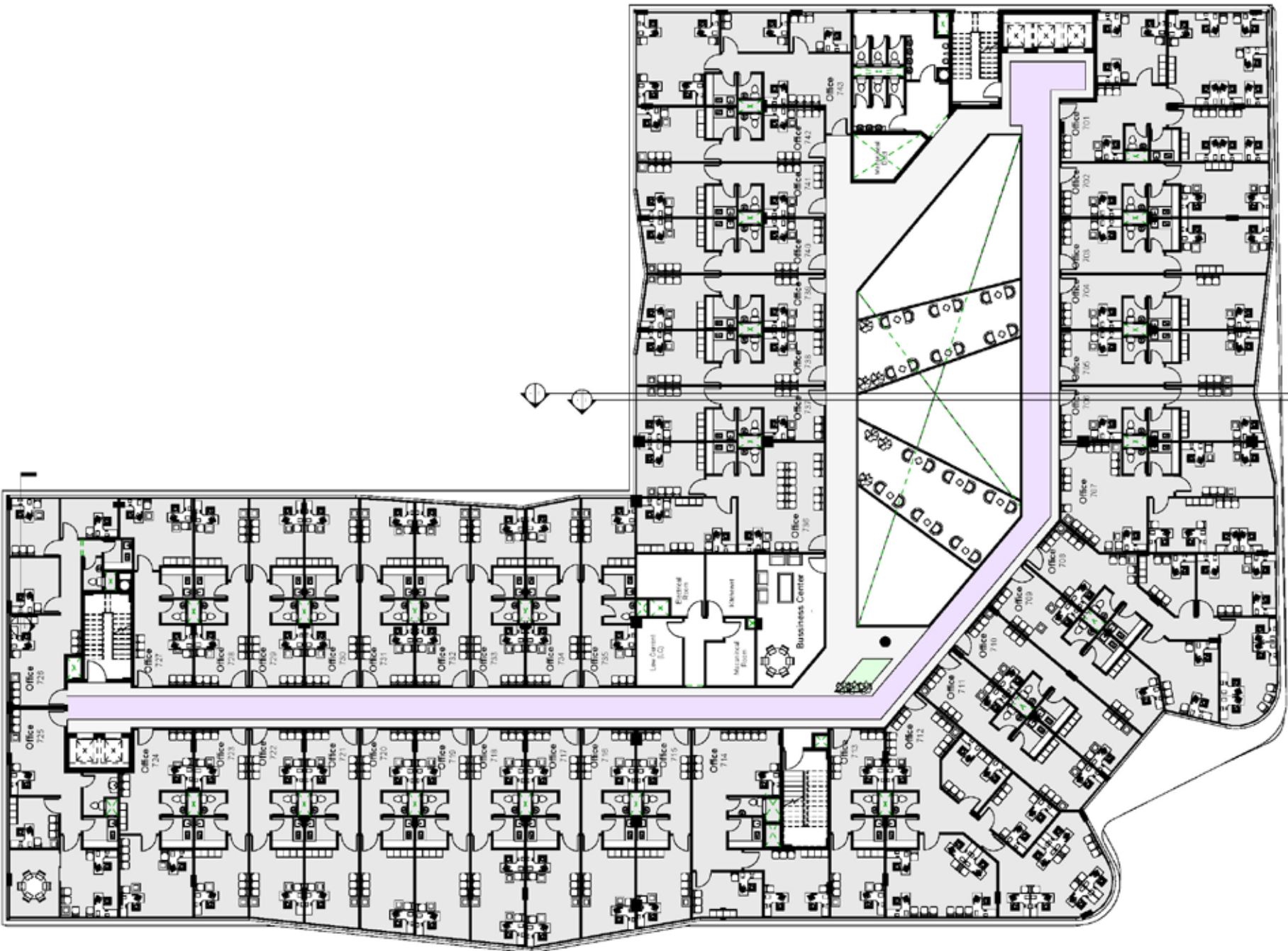


AREA: 3234 SQM

Disclaimer: 1. All room dimensions are measured to structural elements and exclude wall finishes and construction tolerances. 2. All dimensions have been provided by our consultant architects. 3. All materials, dimensions & drawings are approximate. Information is subject to change without notice. 4. Actual suite area may vary from the stated area. Drawings not to scale. 5. The units are measured at typical floor in the building. Columns may vary in size depending on the floor level.

SEVENTH FLOOR

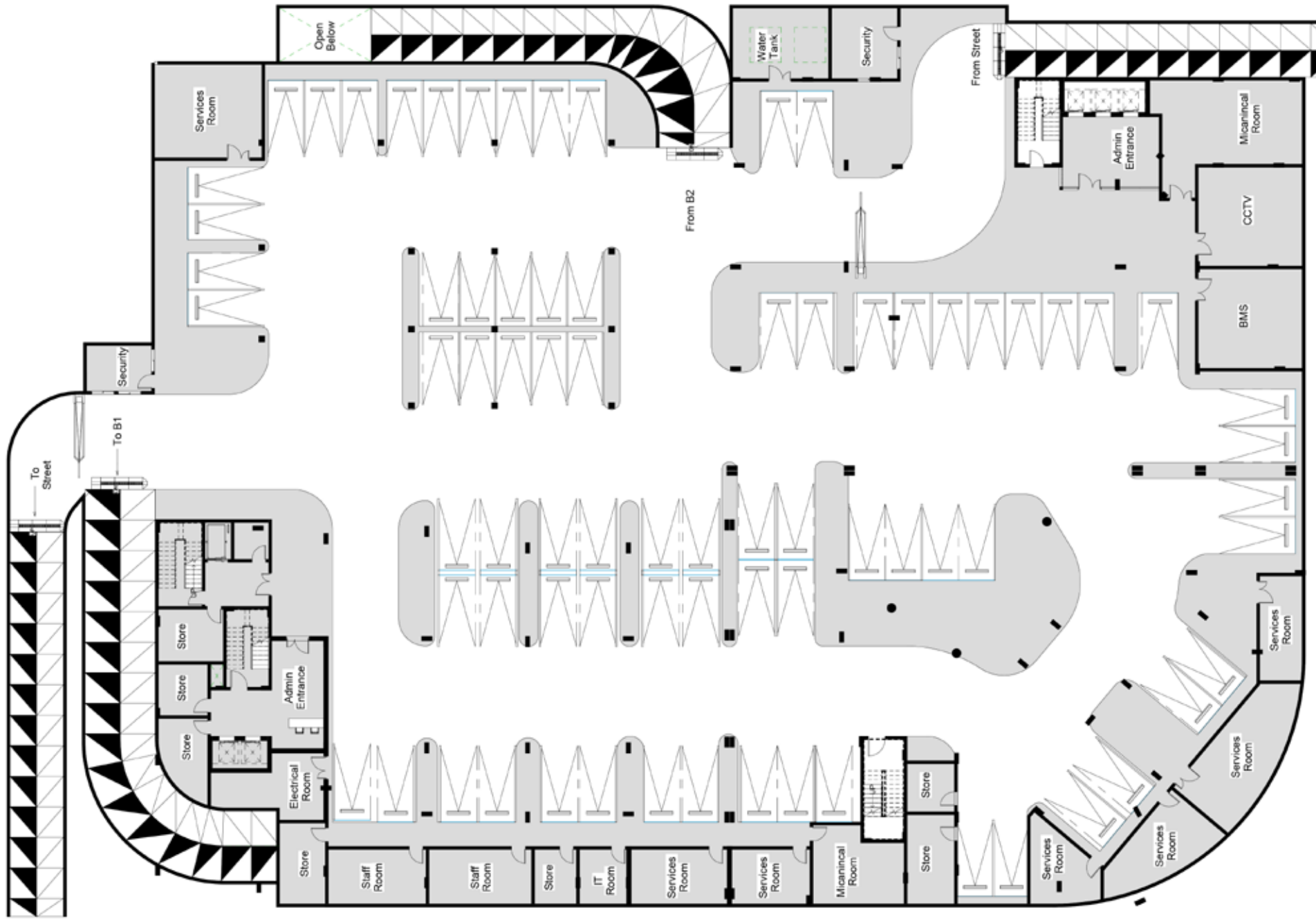
OFFICE



AREA: 3231 SQM

Disclaimer: 1. All room dimensions are measured to structural elements and exclude wall finishes and construction tolerances. 2. All dimensions have been provided by our consultant architects. 3. All materials, dimensions & drawings are approximate. Information is subject to change without notice. 4. Actual suite area may vary from the stated area. Drawings not to scale. 5. The units are measured at typical floor in the building. Columns may vary in size depending on the floor level.

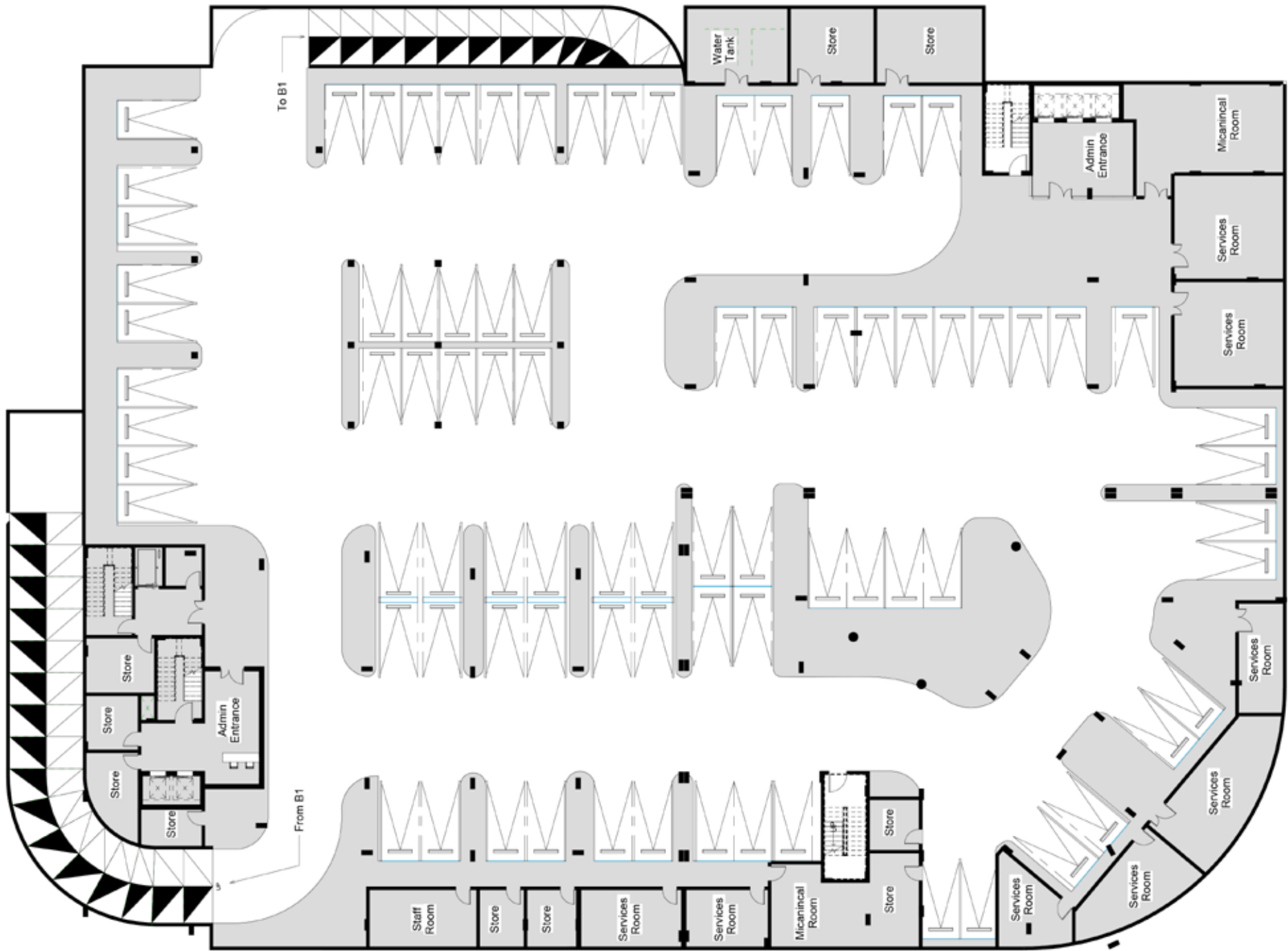
BASEMENT FLOOR 01



AREA: 5265 SQM

Disclaimer: 1. All room dimensions are measured to structural elements and exclude wall finishes and construction tolerances. 2. All dimensions have been provided by our consultant architects. 3. All materials, dimensions & drawings are approximate. Information is subject to change without notice. 4. Actual suite area may vary from the stated area. Drawings not to scale. 5. The units are measured at typical floor in the building. Columns may vary in size depending on the floor level.

BASEMENT FLOOR 02

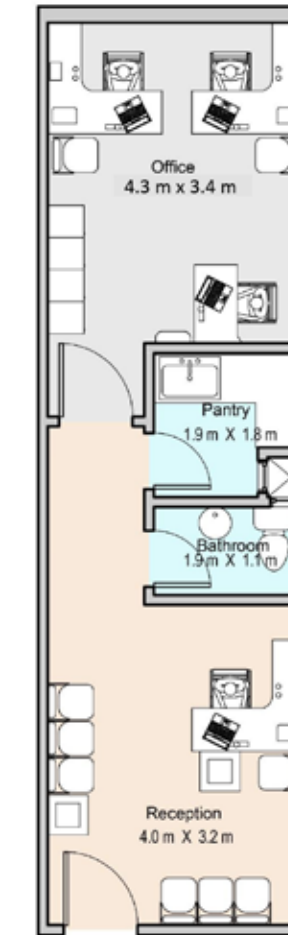


AREA: 5392 SQM

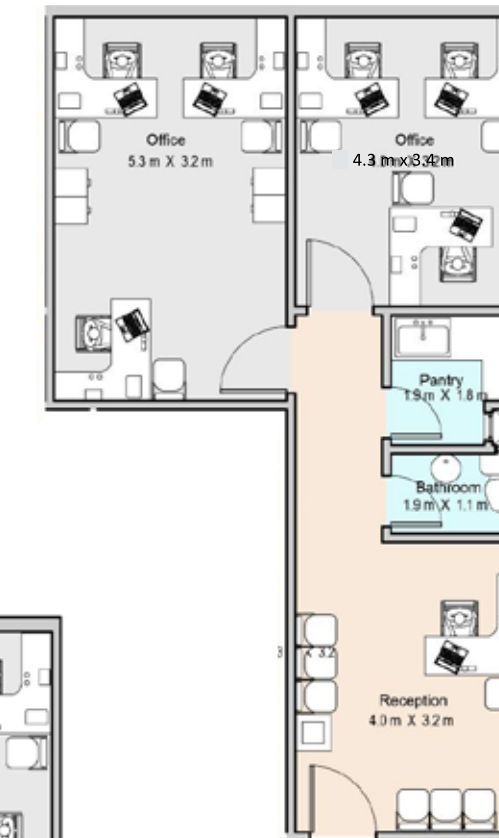
Disclaimer: 1. All room dimensions are measured to structural elements and exclude wall finishes and construction tolerances. 2. All dimensions have been provided by our consultant architects. 3. All materials, dimensions & drawings are approximate. Information is subject to change without notice. 4. Actual suite area may vary from the stated area. Drawings not to scale. 5. The units are measured at typical floor in the building. Columns may vary in size depending on the floor level.

TAILOR YOUR OFFICE WITH ANY MODULAR SPACE.

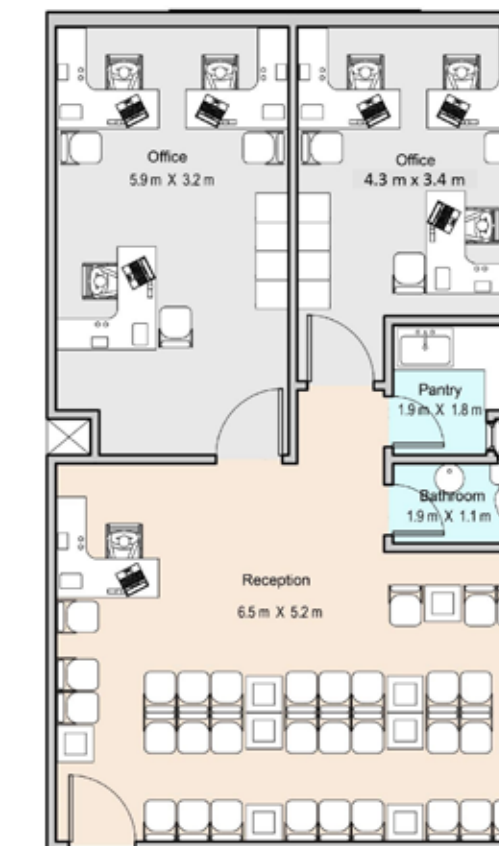
1 OFFICE 40 m²



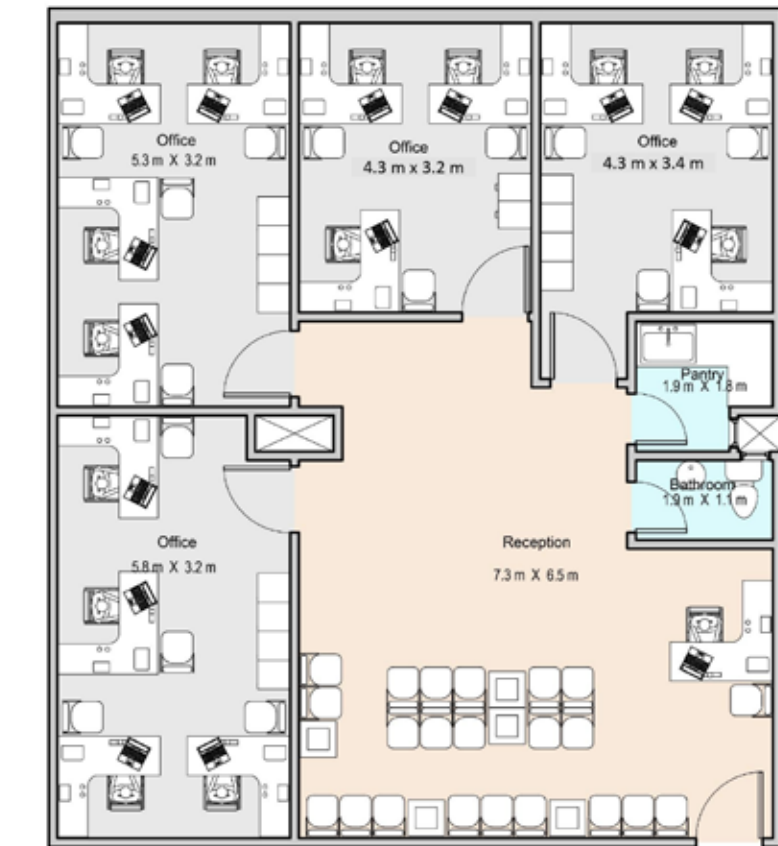
1.5 OFFICE 60 m²



2 OFFICE 80 m²



3 OFFICE 120 m²



Disclaimer: 1. All room dimensions are measured to structural elements and exclude wall finishes and construction tolerances. 2. All dimensions have been provided by our consultant architects. 3. All materials, dimensions & drawings are approximate. Information is subject to change without notice. 4. Actual suite area may vary from the stated area. Drawings not to scale. 5. The units are measured at typical floor in the building. Columns may vary in size depending on the floor level.

Facilities & Amenities

■ GREEN BUILDING

■ SOLAR ENERGY

■ PROPERTY & FACILITY
MANAGEMENT

■ VISITOR MANAGEMENT
SYSTEM

■ CENTRAL AC'S
& HVAC SYSTEM

■ SKYLOUNGE

■ HOUSEKEEPING

■ BUILDING MANAGEMENT
SYSTEM

■ CONFERENCE
& MEETING ROOMS

■ ELECTRONIC GATES

■ BUSINESS CENTER



16534