

ATIKA

NEW CAPITAL

BROCHURE

CLOSER LOOK
TO PARADISE

—
new PLAN
developments
—



ATIKA

NEW CAPITAL





Located in the heart of the new administrative capital, **Atika** is an exquisitely attractive compound that is designed in such a prestigious and blissful way to ensure one's comfort and preserve his class.

The name is of a Greek origin meaning Antica in Arabic. The project is inclusive of two main spines that are overlooking many stunning views.

Views that are mainly consistent of green natural breathtaking landscapes that shape about 82 percent of the entire compound.

ATIKA

The name is of a Greek origin meaning Antica in Arabic.

ABOUT

Only in Atika will you be able to experience the Alto Casa residences.

Mainly Consistent of doubled height and panorama standalone units that come along with a private pool as well as a private garden, while at the same time overlooking the splendiness of the heavenly greenery that surrounds all the units.

Atika also offers exclusively serviced and branded apartments that are fully furnished exclusively for the first time in Egypt by the one and only reputable Tonino Lamborghini.





MORE ABOUT ATIKA

Most of our designs are inspired by European architecture, to give the look and **feel of prestige** as well as serenity. We stressed on the idea of greenery and the **significance of the green landscape** to building ratio.

As we in Atika are mindfully aware of the fact that **greenery** always helps **improve** the **psychological wellbeing** of people.

Thereby we introduced panoramic standalone buildings with green landscapes from all of their surroundings while being encircled by a **jogging route and artificial lakes** too.



ABOUT

new Plan developments

Atika is New plan's third project in Egypt, following the prodigious success of its first project, the distinguished Serrano compound, which is also located in the New Administrative Capital.

New Plan developments launched Atika before the staggering success and reputation it received in the market after launching Serrano, with a clear goal and mission set in mind to redefine the meaning of comfort and luxury within the new capital.

Now we currently have 4 projects in our Egyptian resume already, Serrano, Atika, Tonino laborghini and Eleven all of which happen to be located in the new capital.



WHY ATIKA

Most of our designs are inspired by **European architecture**, to give the look and feel of **prestige** as well as **serenity**.

Atika is an exquisitely attractive compound that is designed in such a prestigious and blissful way to ensure one's comfort and preserve his class.

**CLOSER
LOOK TO
PARADISE**



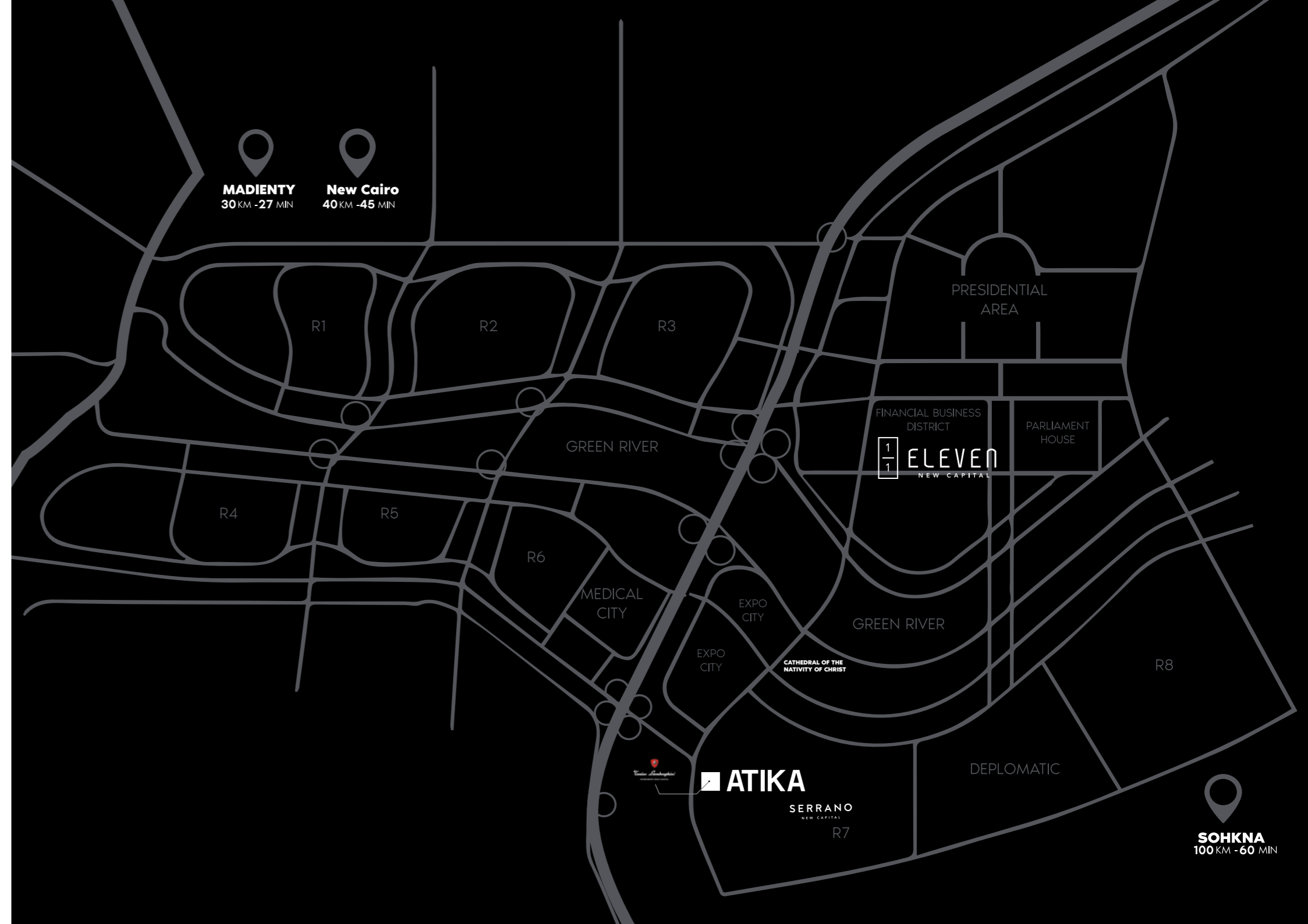
**Located
in the
heart of
new**

**administrative
capital**

PREMIUM LOCATION

Atika's prime location sets it aside and separates it from the many other compounds that are found within the new capital, **as it lies directly on the central axis as a landmark**

Thereby connecting it with two main roads, the **regional ring road**, and **the middle ring road**, to New Cairo. Making Atika's location on the map unmatched and unparalleled.





SURROUNDED BY EVERYTHING

Atika is located next to the most important and influential of neighborhoods in the capital, and the most prominent of them are;

- **THE FINANCIAL AND BUSINESS DISTRICT**
which is inclusive of all the headquarters of all the banks
- **THE DIPLOMATIC QUARTER**
which is one of the most high-status neighborhoods in the administrative capital, including the headquarters of all the embassies.
- **LOCATED NEAR CATHEDRAL OF THE NATIVITY OF CHRIST**
- **THE GOVERNMENTAL QUARTER**
which includes the headquarters of all the branches of government.

A close-up photograph of a person's hand resting on a lush green lawn. The hand is positioned in the center-right of the frame, with fingers slightly spread. The grass is vibrant green and in sharp focus. The background is a soft, out-of-focus green, suggesting a large, open green space. The overall mood is peaceful and natural.

SPACIOUS GREEN AREAS

**surrounding the buildings,
leaving the units to oversee
the most stunning of views.**



The project is inclusive of two main spines that are overlooking many stunning views.

Views that are mainly consistent of green natural breathtaking landscapes that shape about 82 percent of the entire compound.

ONLY IN
ATIKA

will you be able to experience the Alto Casa residences.

Mainly Consistent of **doubled height and panorama** standalone units that come along with a **private pool** as well as a **private garden**, while at the same time overlooking the splendor of the heavenly greenery that surrounds all the units.

Atika also offers exclusively serviced and branded apartments that are fully furnished exclusively for the first time in Egypt by the one and only reputable **Tonino Lamborghini**.



We stressed the idea of greenery and the significance of the green landscape to building ratio.

As we in Atika are mindfully aware of the fact that greenery always helps improve the psychological wellbeing of people.

Thereby we introduced panoramic standalone buildings with green landscapes from all of their surroundings while being encircled by a jogging route and artificial lakes too.



EXCEPTIONAL FACILITIES

Atika provides all of the prominent services and facilities that you will require, A touch of your imagination;

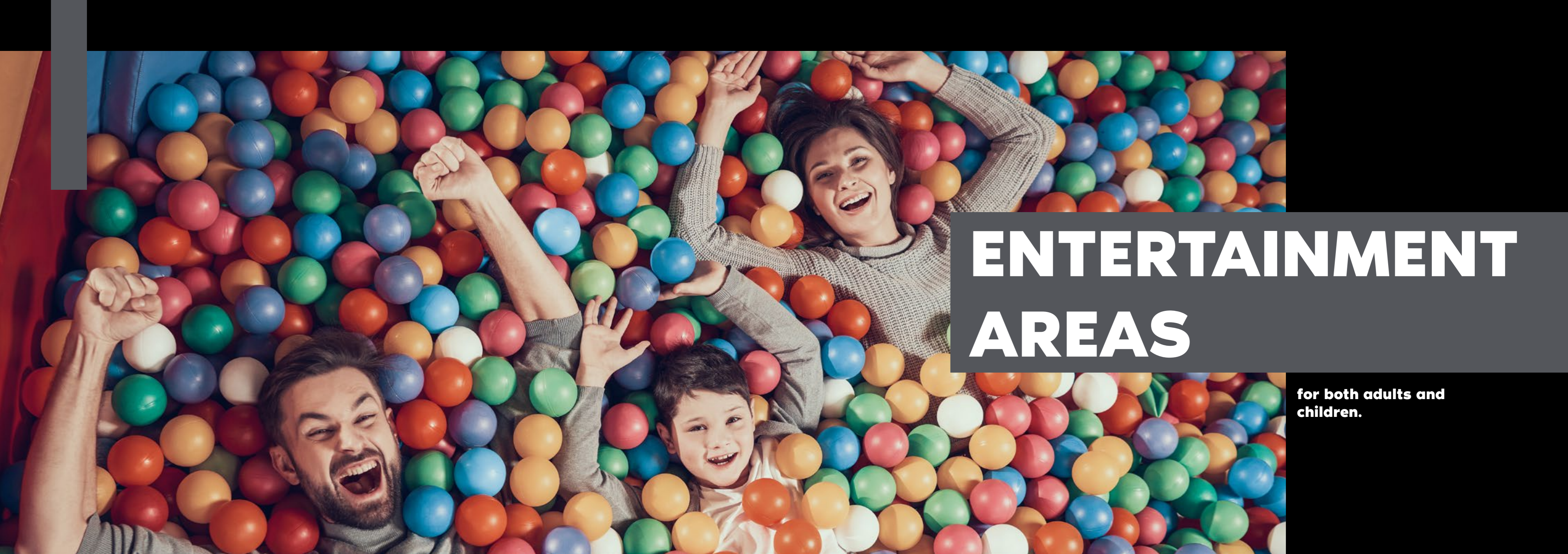


ARTIFICIAL LAKES

and swimming pools
of various sizes.

SPORTS FACILITIES





ENTERTAINMENT AREAS

**for both adults and
children.**

CLUB HOUSE

equipped with everything that might cross one's mind.



SPA

GYM

**INDOORS
POOL**

LOUNGE

**SQUASH
COURTS**





**RESTAURANTS
AND CAFÉS.**



SHOPPING MALL

that is inclusive of the most prominent of international brands and is supported by solar cells and an underground garage.



**24/7 SECURITY WITH
CCTV SURVEILLANCE.**

A JOGGING TRACK

that encircles the entire compound to ensure you a green splendid morning run.



SOLAR PANELS

HOUSE KEEPING

UNDERGROUND PARKING.

MINI GOLF COURSE

OPTIONAL SMART HOME SYSTEM

KIDS AREA



MASTER PLAN

Atika offers you a distinct set of units that vary from apart-hotels to duplexes and penthouses, each coming with a different range of sizes to best meet your needs and comfort.

Atika's units are designed after the European style, which merges between simplicity and elegance at the same time.





ATIKA

NEW CAPITAL

offers you apartments with areas ranging from 70 m² to 180 m² divided, as follows:

70 M²

STUDIO APARTMENTS

110 M²

APARTMENTS

140 M²

APARTMENTS

160 M²-180 M²

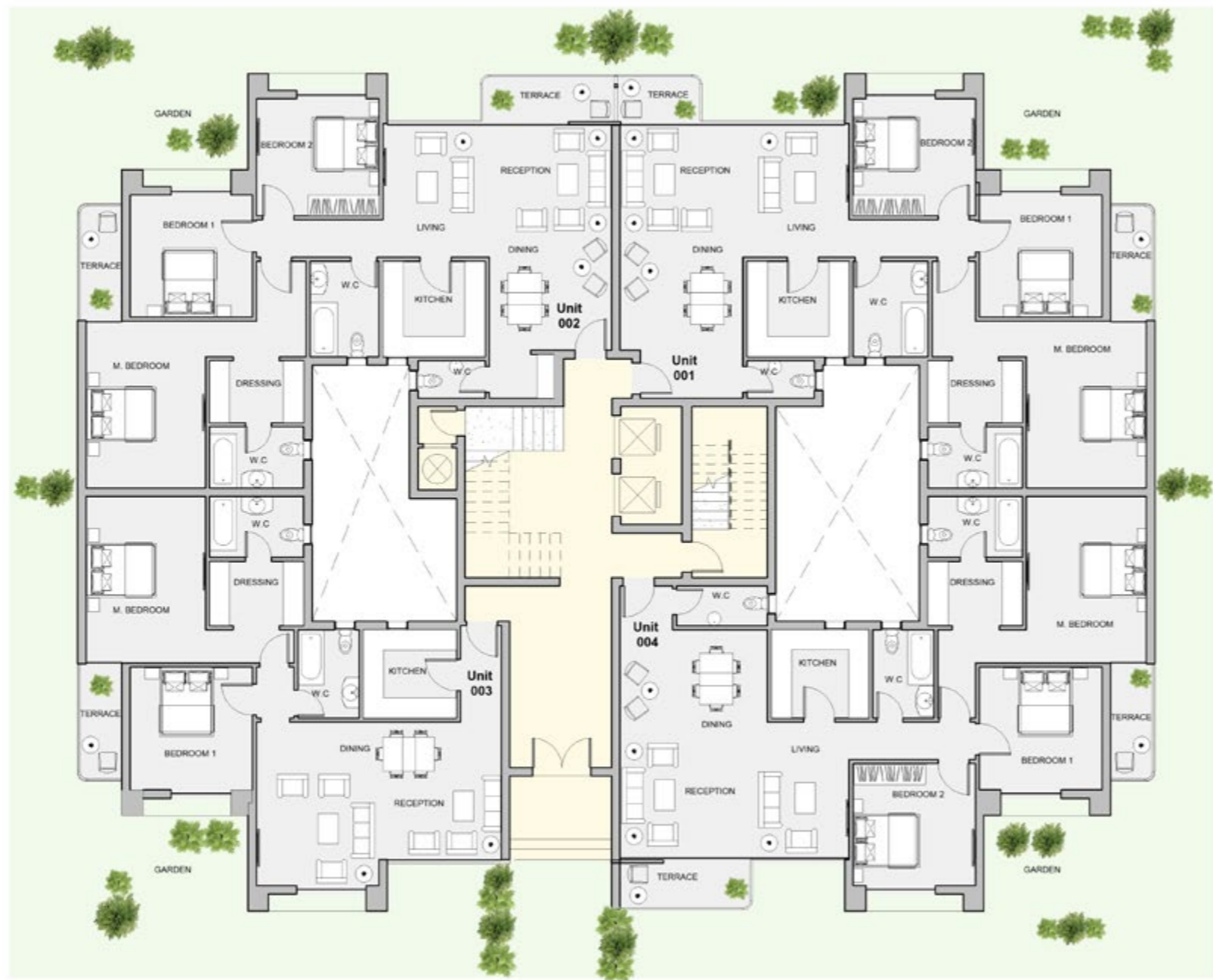
DUPLEX APARTMENTS
AND PENTHOUSES

180M2

TYPE A

GROUND FLOOR

Unit	Area
001	179
002	180
003	138
004	181

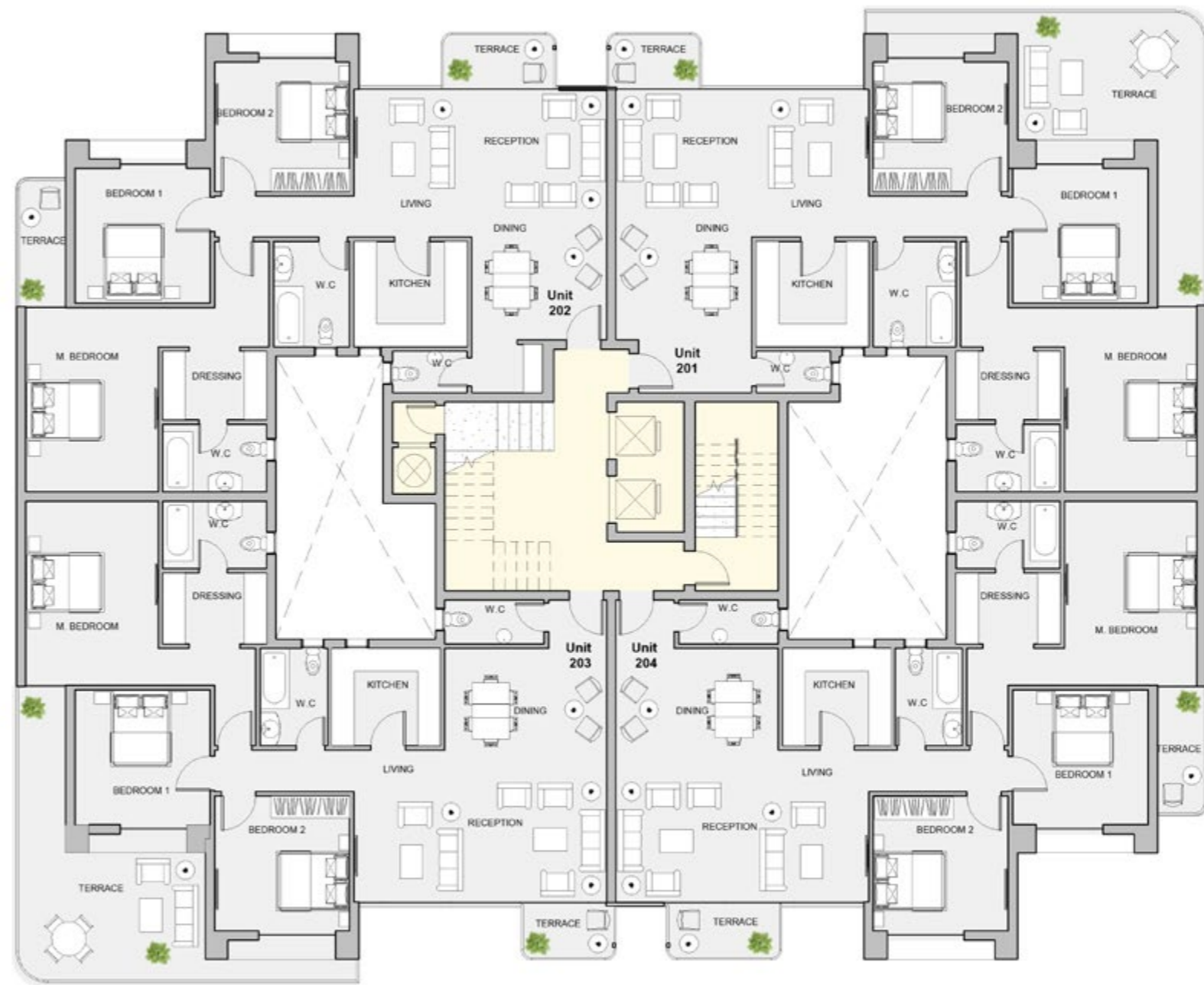


180M2

TYPE A

TYPICAL FLOOR

Unit	Area
201	213
202	178
203	211
204	178



160M2
TYPE B
 GROUND FLOOR

Unit	Area
001	161
002	159
003	124
004	159



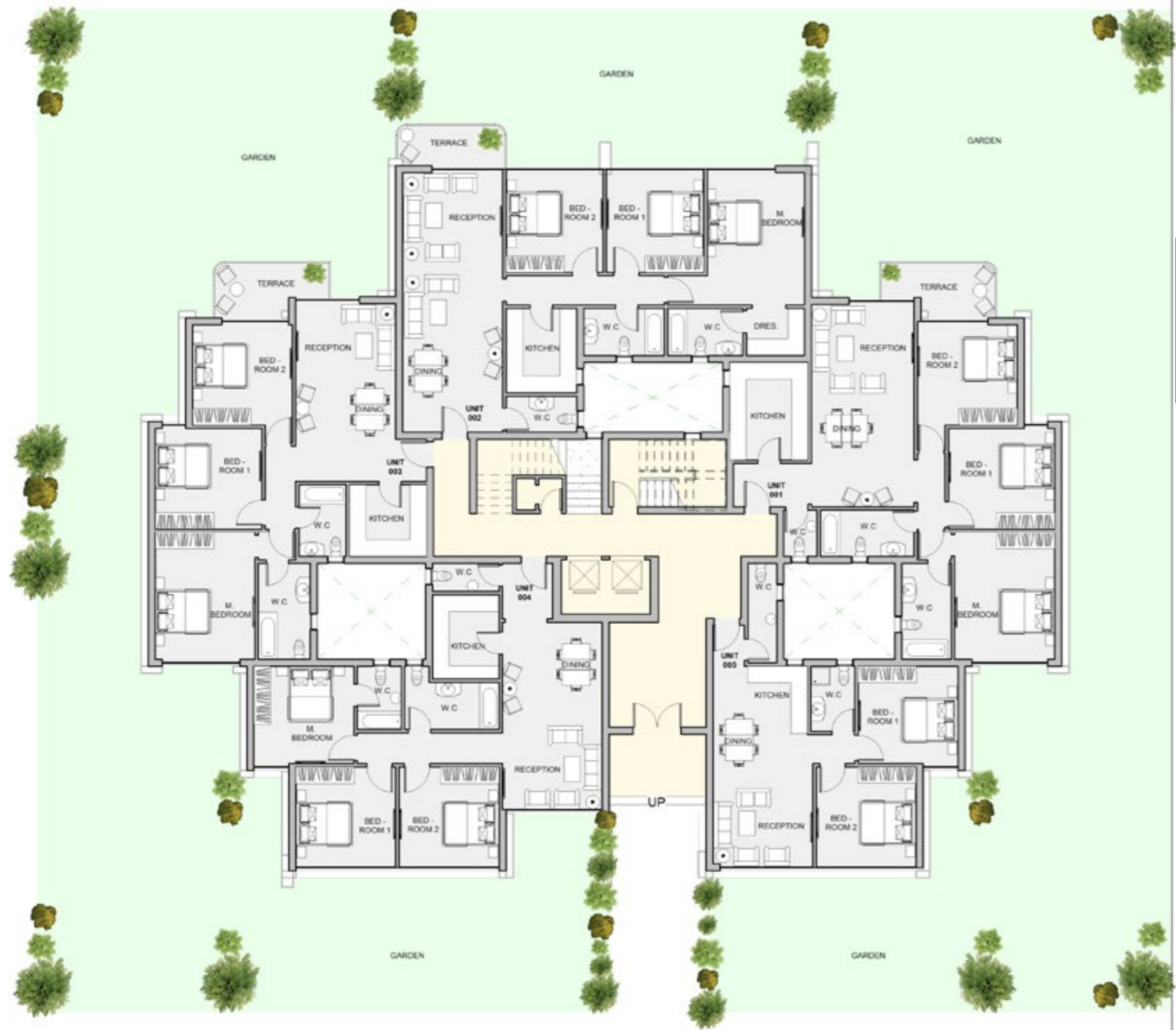
160M2
TYPE B
 TYPICAL FLOOR

Unit	Area
501	160
502	159
503	158
504	158



140M2
TYPE C
 GROUND FLOOR

Unit	Area
001	158
002	161
003	141
004	134
005	91



140M2
TYPE C
 TYPICAL FLOOR

Unit	Area
201	153
202	161
203	141
204	142
205	139

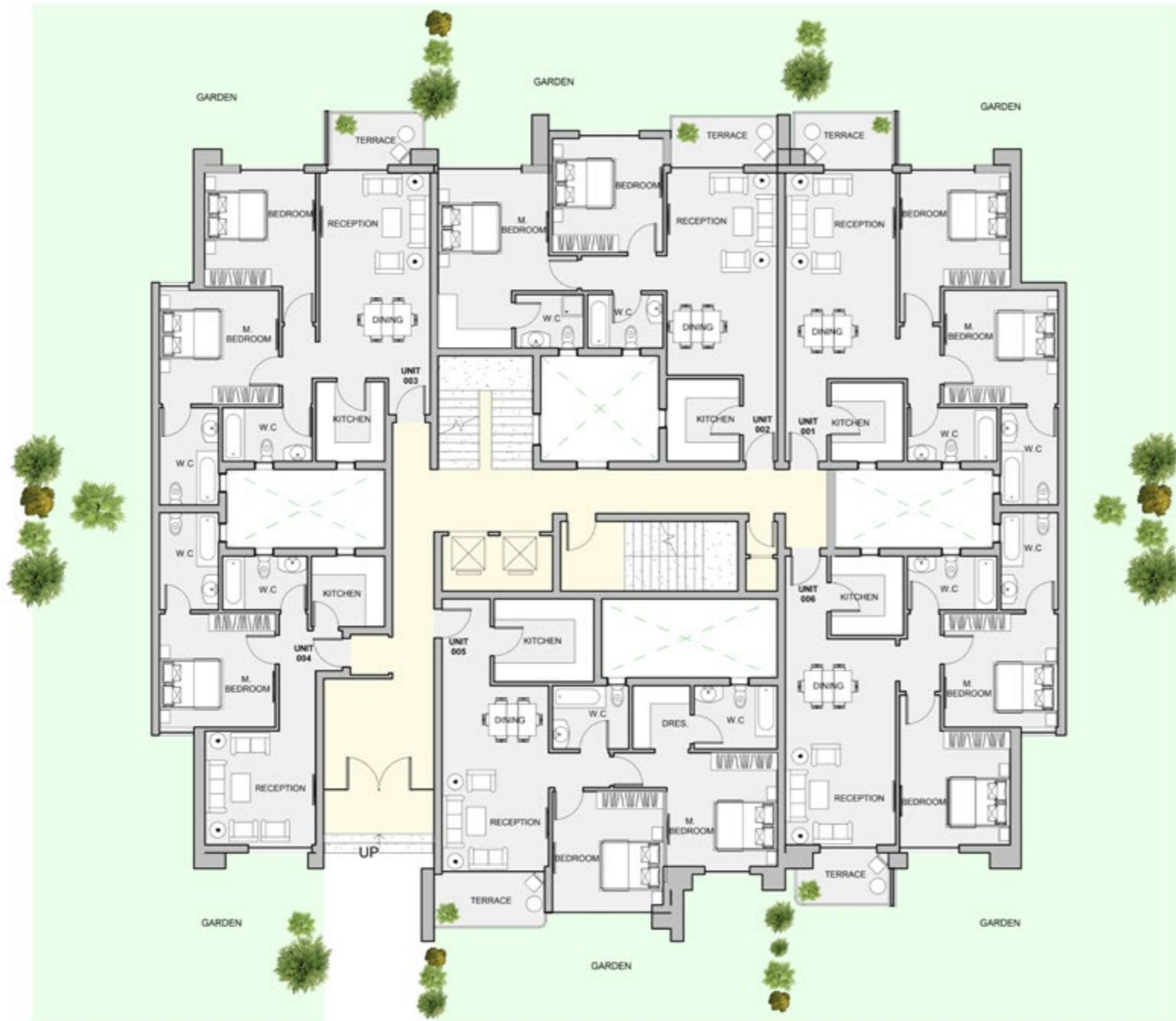


110M2

TYPE D

GROUND FLOOR

Unit	Area
001	112
002	112
003	109
004	72
005	117
006	112

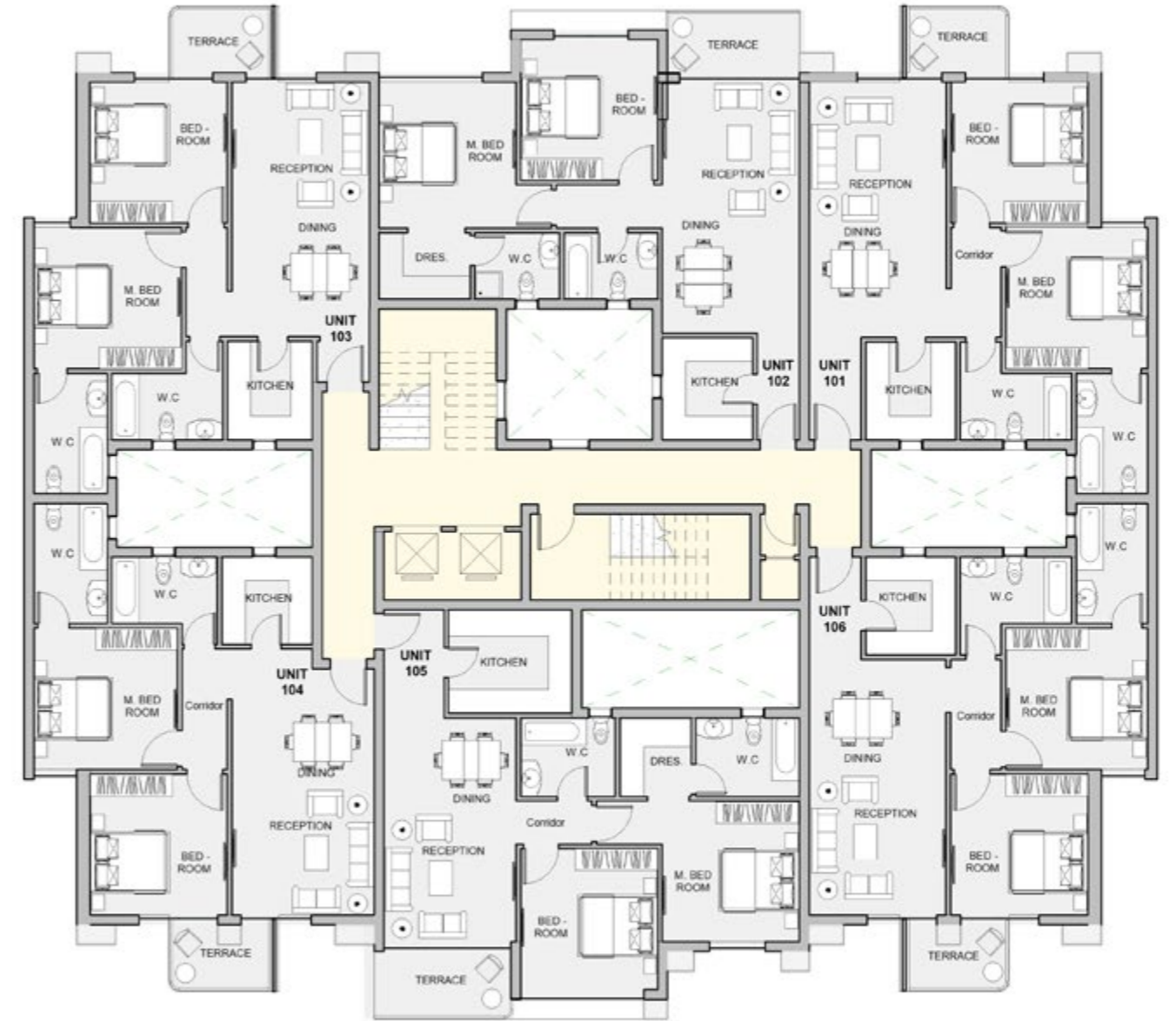


110M2

TYPE D

TYPICAL FLOOR

Unit	Area
101	111
102	113
103	109
104	107
105	117
106	112

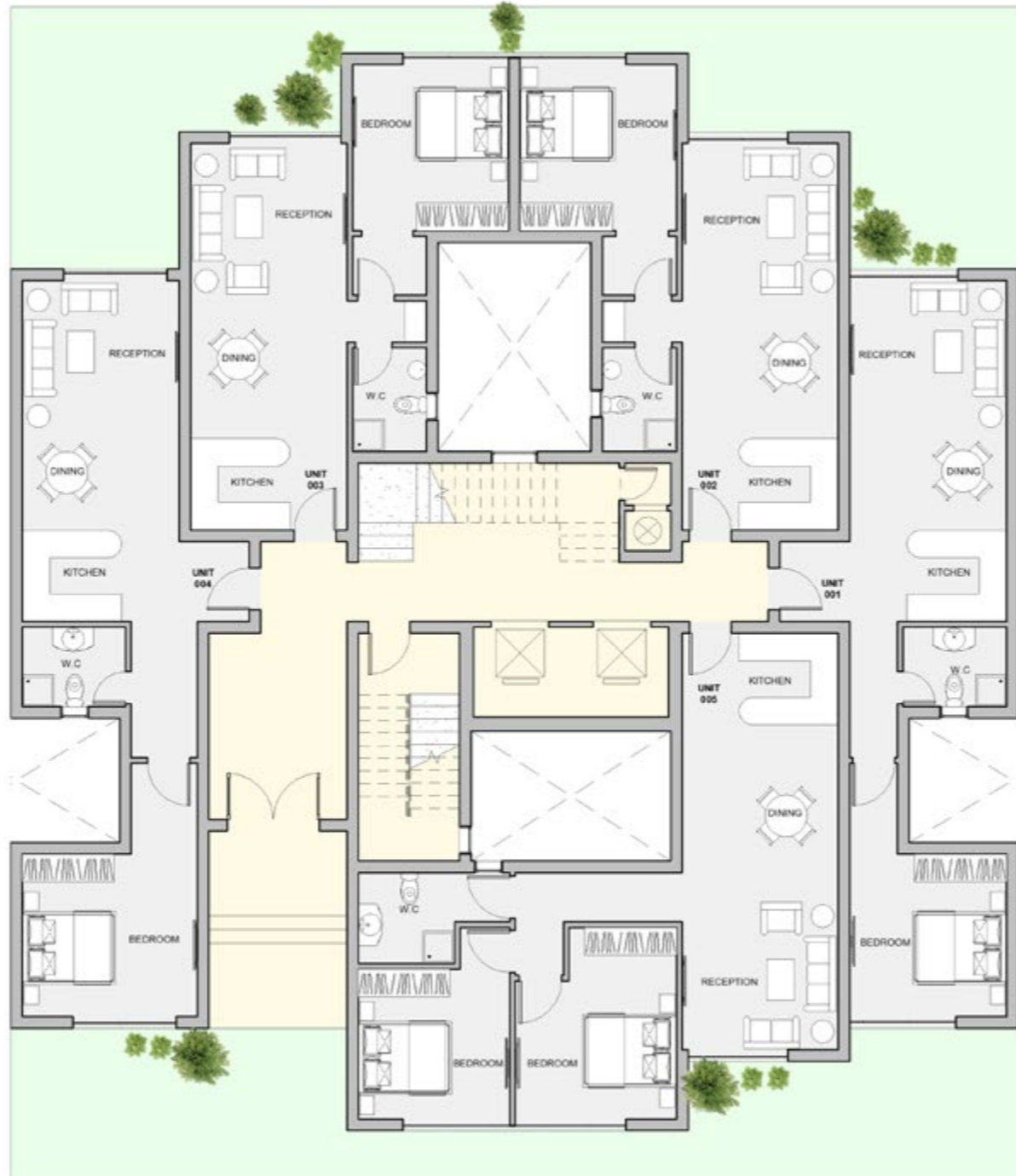


70M2

TYPE E

GROUND FLOOR

Unit	Area
001	74
002	71
003	71
004	80
005	97

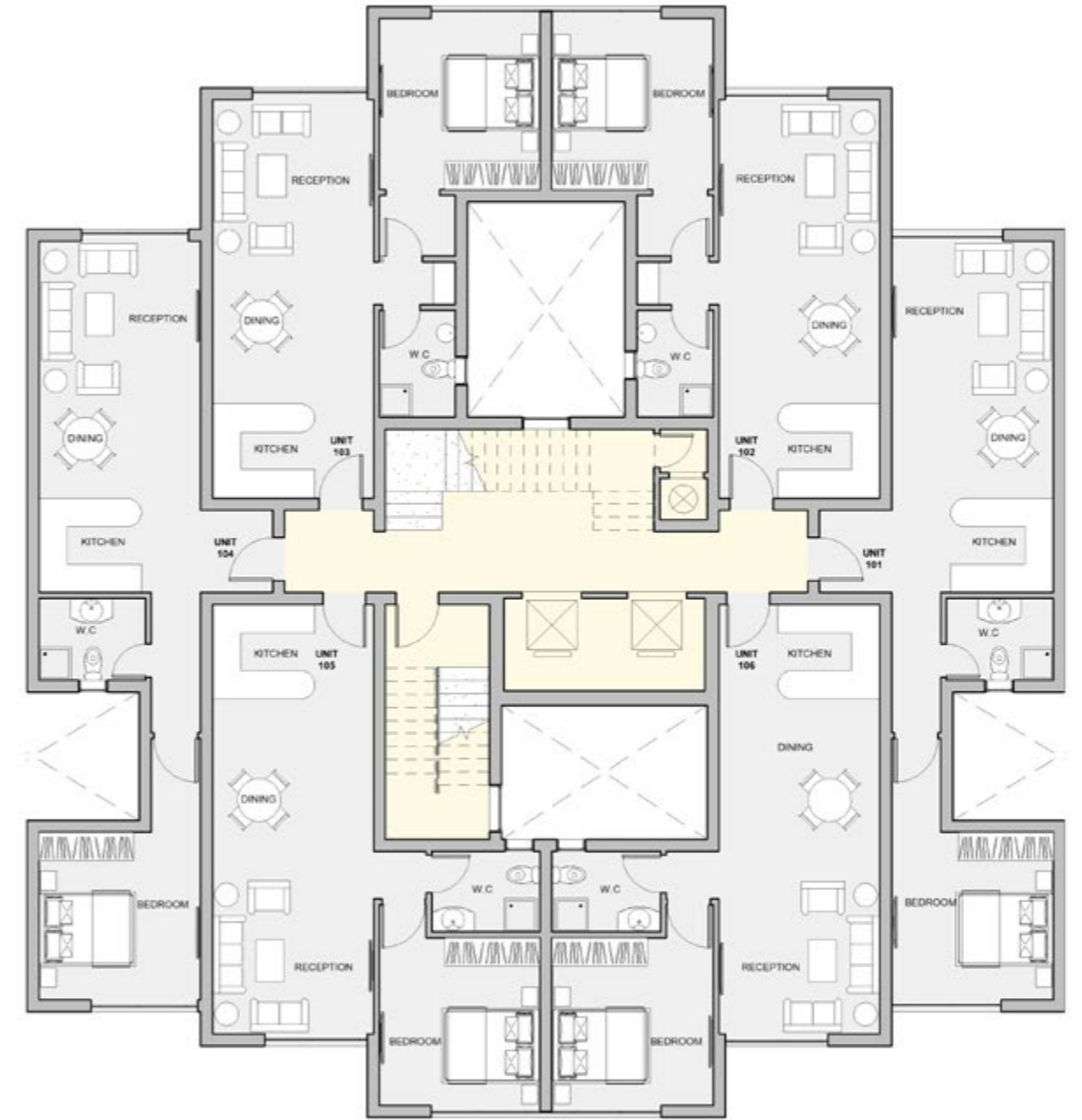


70M2

TYPE E

TYPICAL FLOOR

Unit	Area
101	74
102	71
103	71
104	74
105	70
106	71



ALTO CASA TYPES



THE DUPLEX APARTMENTS

come with private gardens,
while the penthouse apartments
have their swimming pools.





The buildings inside the Atika Compound

have uniquely distinct designs, as well as all of the buildings containing elevators that are manufactured by the most reliable of international brands.

CLOSER LOOK TO PARADISE



crème

Also within the gates of Atika Compound lies the Alto Casa buildings, which are designed in such a way that each building contains three duplex apartments “ground, center, and penthouse” all of which include swimming pools and their own green spaces.

The Alto Casa buildings are primarily designed only for the crème de la crème of people who happen to have an exquisite taste and appreciation for art and luxury as they are indeed our pride and joy, they come in different sizes yes.

Nevertheless, they are all tailored in such an utterly unique way that it’s almost impossible not to fall in love with them as they are indeed a luxurious artifact.

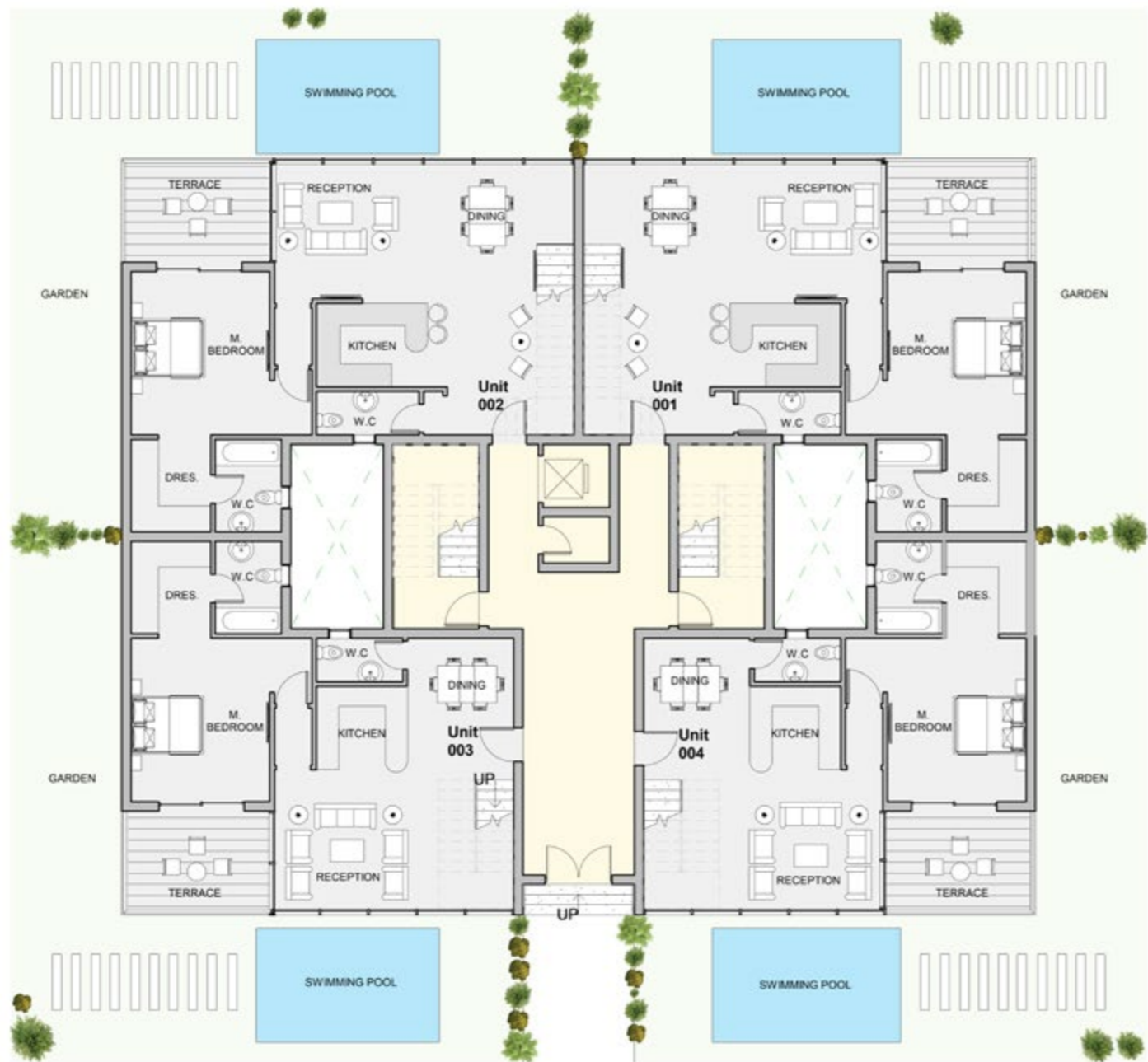


ALTO CASA

TYPE A

GROUND FLOOR

Unit	Area
001	LEVEL 1 133 LEVEL 2 75 208 (150 M ² GARDEN Excluded)
002	LEVEL 1 133 LEVEL 2 75 208 (150 M ² GARDEN Excluded)
003	LEVEL 1 118 LEVEL 2 93 211 (150 M ² GARDEN Excluded)
004	LEVEL 1 118 LEVEL 2 93 211 (150 M ² GARDEN Excluded)

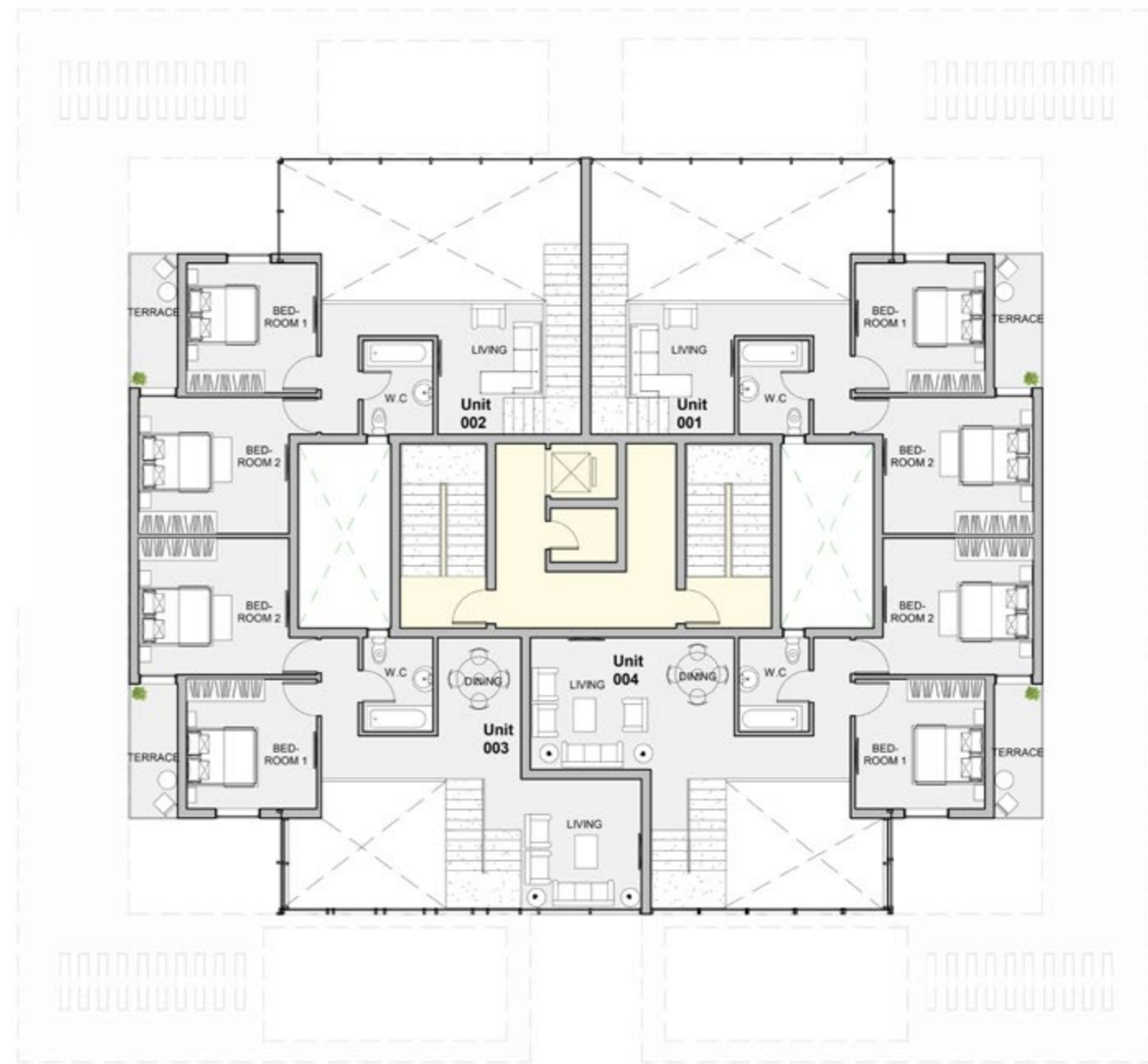


ALTO CASA

TYPE A

FIRST FLOOR

Unit	Area
001	LEVEL 1 133 LEVEL 2 75 208 (150 M ² GARDEN Excluded)
002	LEVEL 1 133 LEVEL 2 75 208 (150 M ² GARDEN Excluded)
003	LEVEL 1 118 LEVEL 2 93 211 (150 M ² GARDEN Excluded)
004	LEVEL 1 118 LEVEL 2 93 211 (150 M ² GARDEN Excluded)



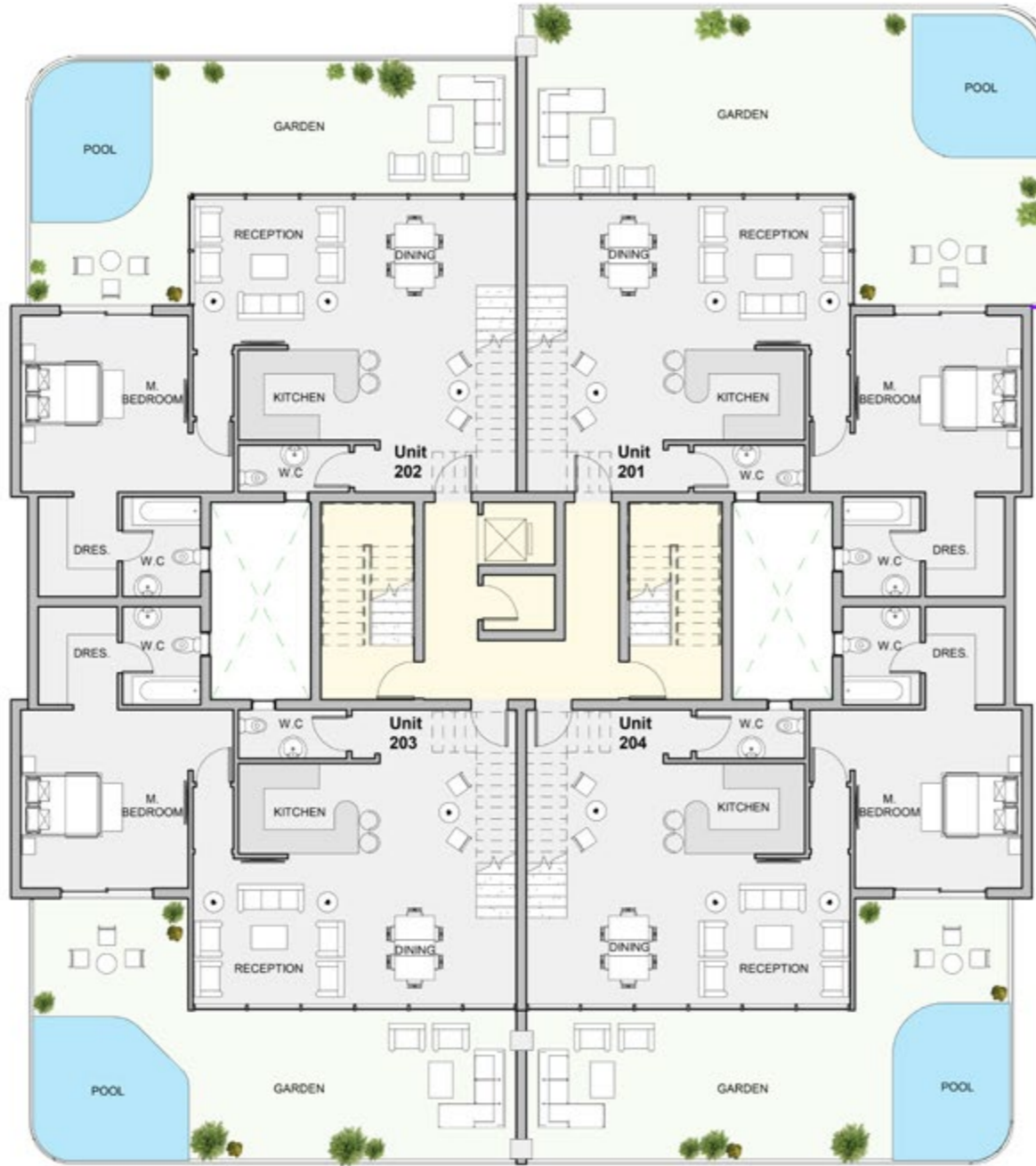
ALTO CASA

TYPE A

SECOND FLOOR

Unit	Area
201	LEVEL 1 122
	LEVEL 2 75
202	LEVEL 1 122
	LEVEL 2 75
203	LEVEL 1 122
	LEVEL 2 75
204	LEVEL 1 122
	LEVEL 2 75

(92 M² TERRACE Excluded)
(66 M² TERRACE Excluded)
(72 M² TERRACE Excluded)
(72 M² TERRACE Excluded)



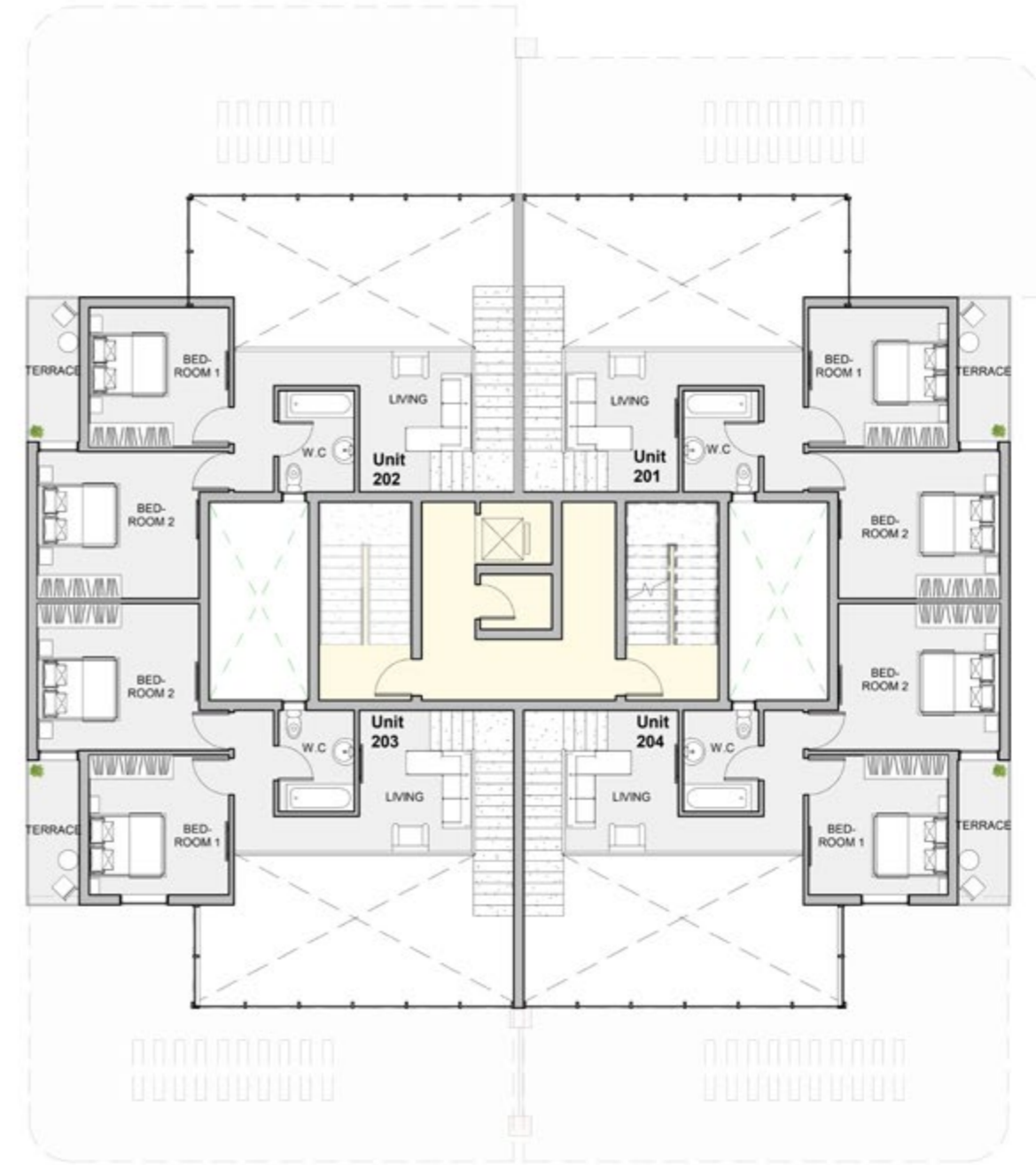
ALTO CASA

TYPE A

THIRD FLOOR

Unit	Area
201	LEVEL 1 122
	LEVEL 2 75
202	LEVEL 1 122
	LEVEL 2 75
203	LEVEL 1 122
	LEVEL 2 75
204	LEVEL 1 122
	LEVEL 2 75

(92 M² TERRACE Excluded)
(66 M² TERRACE Excluded)
(72 M² TERRACE Excluded)
(72 M² TERRACE Excluded)

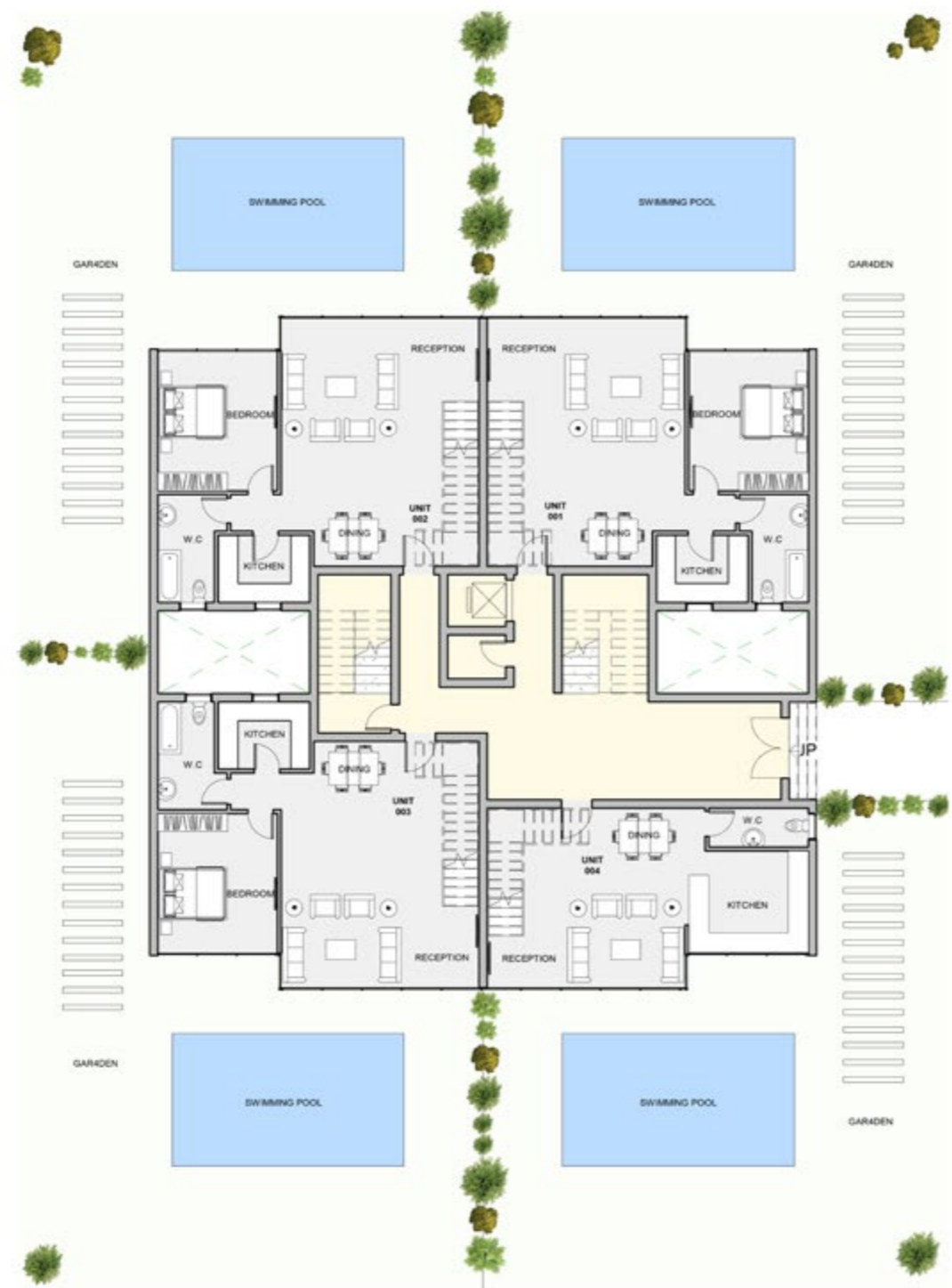


ALTO CASA

TYPE B

GROUND FLOOR

Unit	Area		
001	LEVEL 1	100	(70 M ² GARDEN Excluded)
	LEVEL 2	66	
002	LEVEL 1	100	(70 M ² GARDEN Excluded)
	LEVEL 2	66	
003	LEVEL 1	100	(70 M ² GARDEN Excluded)
	LEVEL 2	66	
004	LEVEL 1	67	(70 M ² GARDEN Excluded)
	LEVEL 2	73	

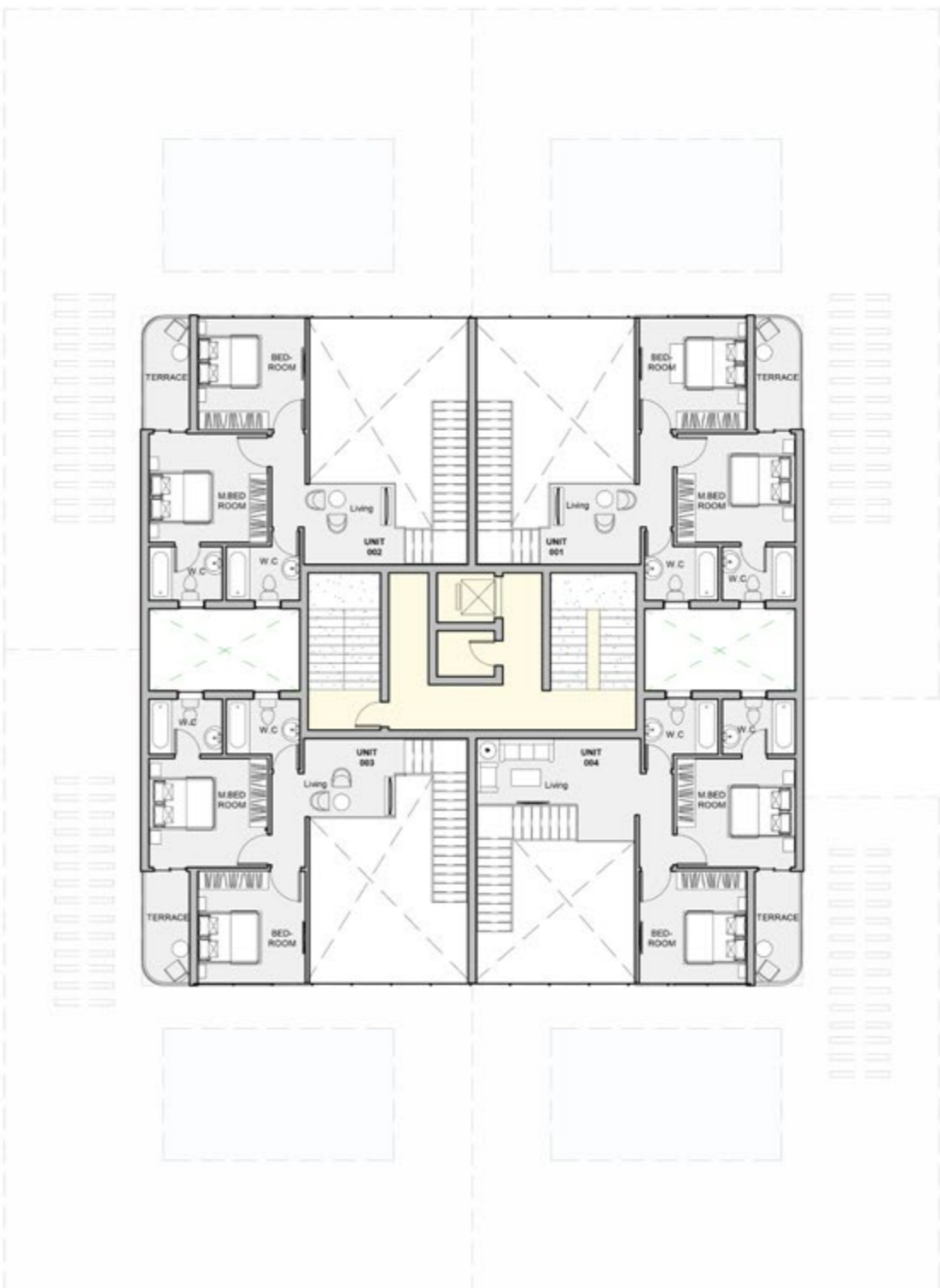


ALTO CASA

TYPE B

FIRST FLOOR

Unit	Area		
001	LEVEL 1	100	(70 M ² GARDEN Excluded)
	LEVEL 2	66	
002	LEVEL 1	100	(70 M ² GARDEN Excluded)
	LEVEL 2	66	
003	LEVEL 1	100	(70 M ² GARDEN Excluded)
	LEVEL 2	66	
004	LEVEL 1	67	(70 M ² GARDEN Excluded)
	LEVEL 2	73	

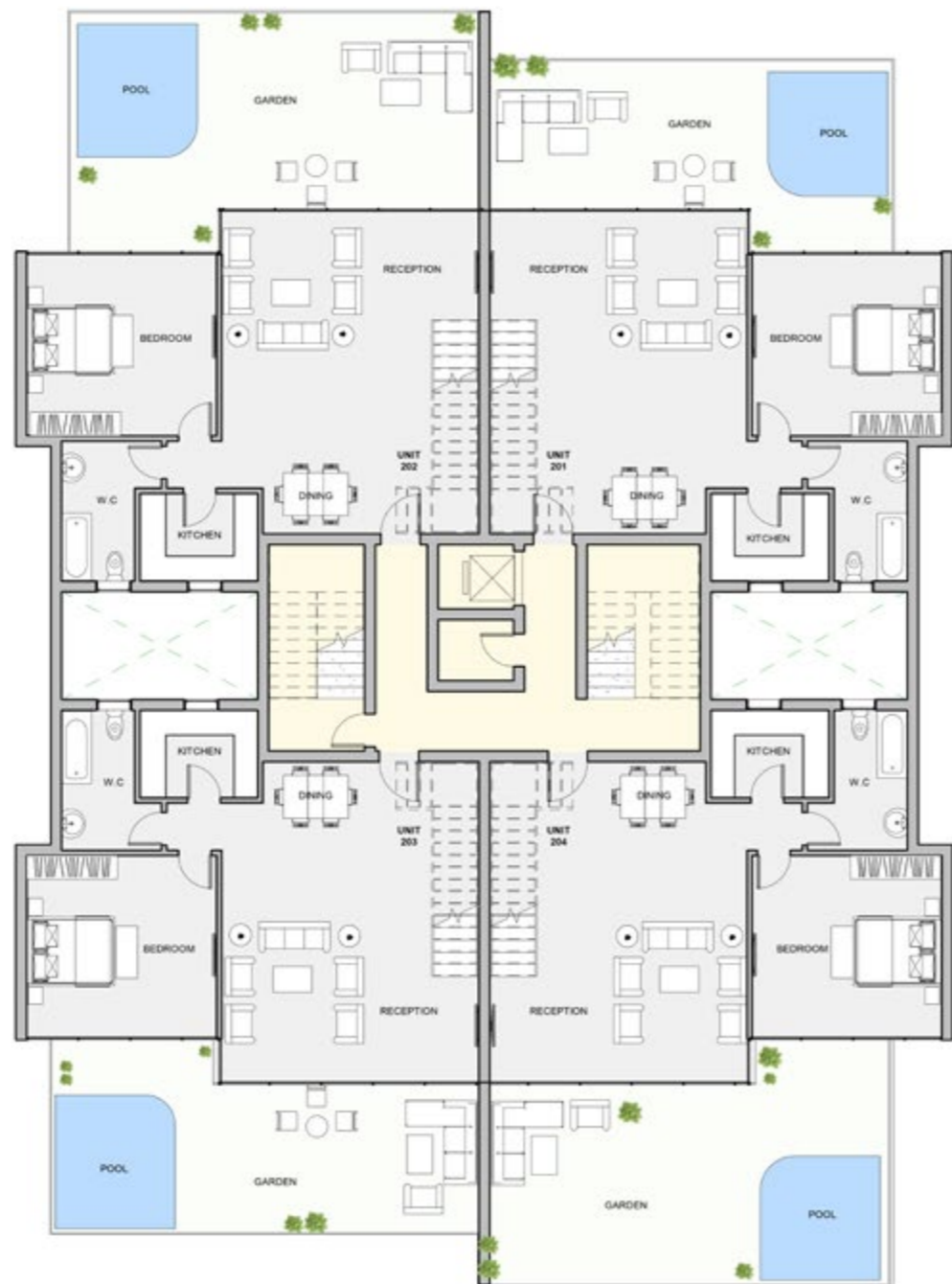


ALTO CASA

TYPE B

SECOND FLOOR

Unit	Area
201	LEVEL 1 105 LEVEL 2 66 171 (45 M ² TERRACE Excluded)
202	LEVEL 1 105 LEVEL 2 66 171 (60 M ² TERRACE Excluded)
203	LEVEL 1 105 LEVEL 2 66 171 (45 M ² TERRACE Excluded)
204	LEVEL 1 105 LEVEL 2 66 171 (60 M ² TERRACE Excluded)

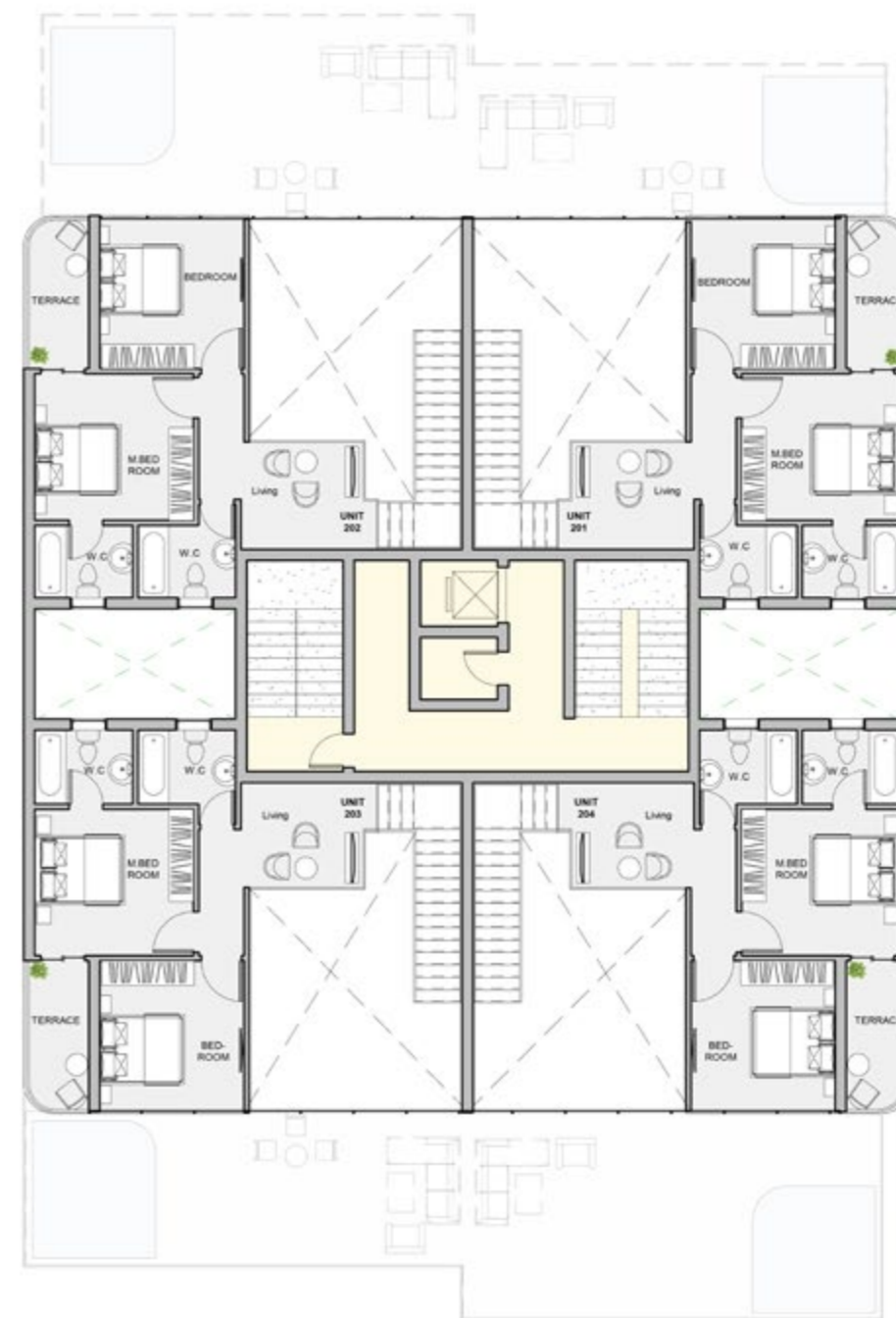


ALTO CASA

TYPE B

THIRD FLOOR

Unit	Area
201	LEVEL 1 105 LEVEL 2 66 171 (45 M ² TERRACE Excluded)
202	LEVEL 1 105 LEVEL 2 66 171 (60 M ² TERRACE Excluded)
203	LEVEL 1 105 LEVEL 2 66 171 (45 M ² TERRACE Excluded)
204	LEVEL 1 105 LEVEL 2 66 171 (60 M ² TERRACE Excluded)



16534

info@newplanddevelopments.com

Head Office: Trivium Building, Floor
no. 4, 90 St, 5th Settlements, New
Cairo, Egypt.

Sales Office: Raya Building, Land
Number 133, 5th Settlement, New
Cairo, Egypt.

newplanddevelopments.com